



Benham & Reeves

Accolade Avenue, Southall, UB1

£381 per week, £1,651 per month + fees

 2 Bedrooms  2 Bathrooms  Furnished

This stunning apartment with parking is situated in the Green Quarter, a desirable development in West London, with views overlooking landscaped gardens and surrounding parkland. Southall Station (Zone 4) is just a short walk away and is a strategic stop on the new super-fast Elizabeth Line.

Please [click here](#) for full detail

Property features

Brand new | Secure parking space | Concierge | Balcony | Wood floors | EPC-B | Full Height Windows | Well-Equipped Kitchen | Nearby Southall Station

For more information about this property, please call our Ealing branch on

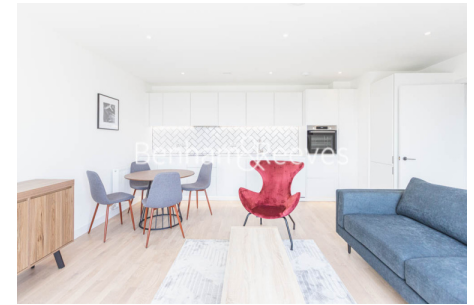
020 8280 0140

Redress & Client Money Protection :

Benham and Reeves are members of The Property Ombudsman redress scheme and have Client Money protection with ARLA Propertymark. You can find more information on our website at <https://www.benham.com/membership/>



Benham & Reeves



Accolade Avenue, Southall, UB1

£381 per week, £1,651 per month + fees

www.benhams.com

Score	Energy rating	Current	Potential
92+	A		
81-91	B	83 B	83 B
69-80	C		
55-68	D		
39-54	E		
21-38	F		
1-20	G		

London branches open six days a week Mon - Sat

Canary Wharf | City | Colindale | Dartmouth Park | Ealing | Fulham
Hammersmith | Hampstead | Highgate | Hyde Park | Kensington | Kew
Knightsbridge | Nine Elms | Shoreditch | Southall | Surrey Quays
Wapping | Wembley | White City | Woolwich

International offices

China | Hong Kong SAR | India | Indonesia | Qatar | Malaysia | Middle East |
Singapore | South Africa | Thailand | Turkey

