



Benham & Reeves

Greenleaf Walk, Southall, UB1

£277 per week, £1,200 per month + fees

 1 Bedroom  1 Bathroom  Furnished

This suite style 6th floor apartment is situated in an exciting development set in a surround of 4.5 acres of central gardens and Wetlands in West London, close to fast transport connections

Please [click here](#) for full detail

Property features

One Bedroom | Suite style apartment | Concierge | Balcony | Wood floors | EPC-B | Sixth Floor | Well-Equipped Kitchen | Southall British Rail Station

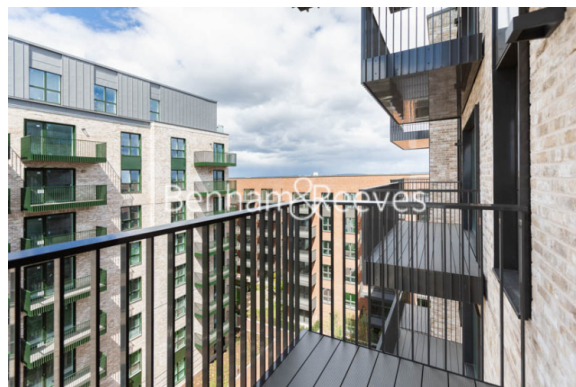
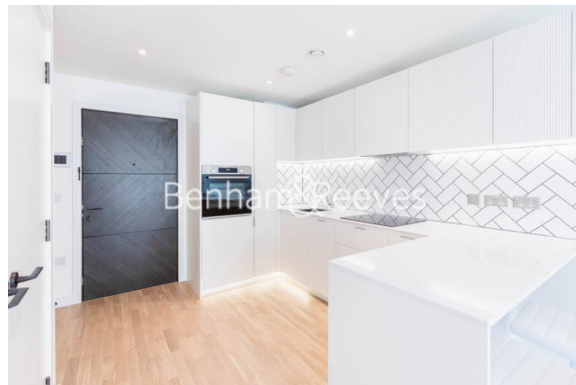
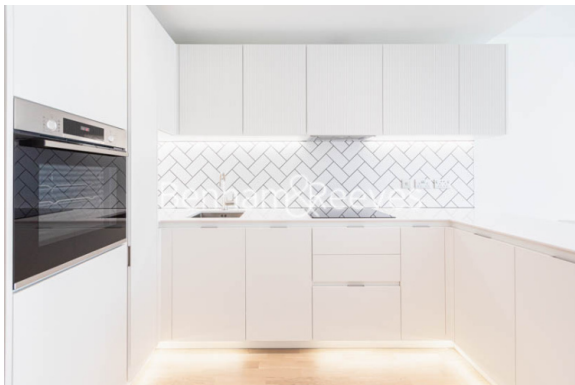
For more information about this property, please call our Ealing branch on

020 8280 0140

Redress & Client Money Protection :
Benham and Reeves are members of The Property Ombudsman redress scheme and have Client Money protection with ARLA Propertymark.
You can find more information on our website at <https://www.benhams.com/membership/>



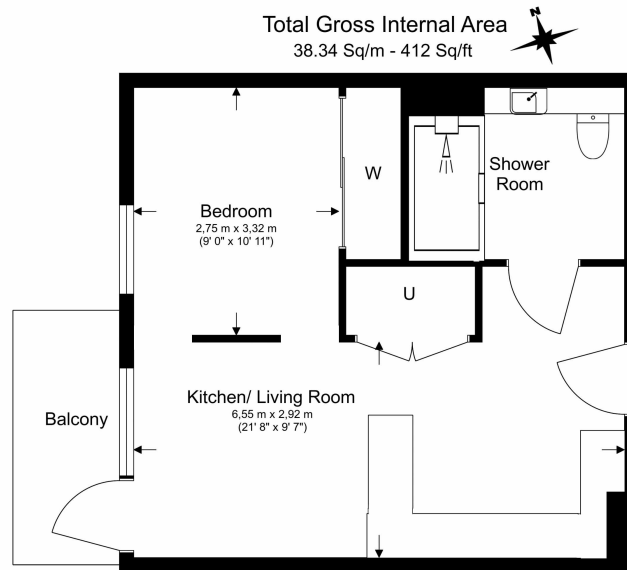
Benham & Reeves



Greenleaf Walk, Southall, UB1

£277 per week, £1,200 per month + fees

www.benhams.com



Floor Plan measurements are approximate and are for illustrative purposes only. While we do not doubt the floor plans accuracy, we make no guarantee, warranty or representation as to the accuracy and completeness of the floor plan.

Score	Energy rating	Current	Potential
92+	A		
81-91	B	84 B	84 B
69-80	C		
55-68	D		
39-54	E		
21-38	F		
1-20	G		

London branches open six days a week Mon - Sat

Canary Wharf | City | Colindale | Dartmouth Park | Ealing | Fulham
Hammersmith | Hampstead | Highgate | Hyde Park | Kensington | Kew
Knightsbridge | Nine Elms | Shoreditch | Southall | Surrey Quays
Wapping | Wembley | White City | Woolwich

International offices

China | Hong Kong SAR | India | Indonesia | Qatar | Malaysia | Middle East |
Singapore | South Africa | Thailand | Turkey



Benham & Reeves