



Benham & Reeves

Greenleaf Walk, Southall, UB1

£381 per week, £1,651 per month + fees

 1 Bedroom  1 Bathroom  Furnished

This Stunning 5th floor apartment is situated in an outstanding new biodiverse Berkeley development on the Western fringe of London featuring great views of the surrounding landscaped gardens and perfectly located for Southall amenities and Southall Station.

Please [click here](#) for full detail

Property features

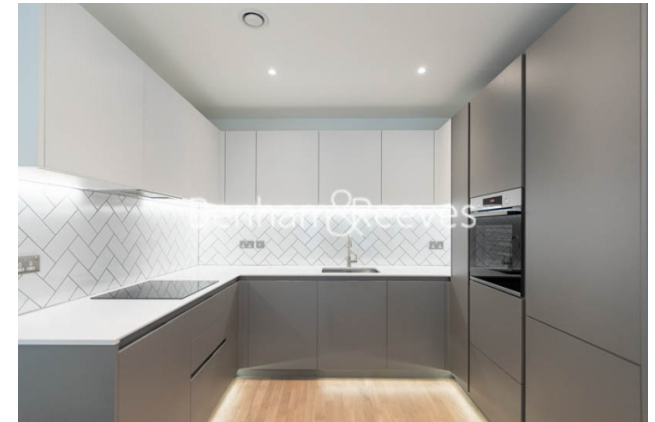
1 Bedroom | Concierge | Gym | Cinema room | Modern kitchen | EPC-B | Residents lounge | Balcony | Southall Amenities | Southall Station (Elizabeth Line)

For more information about this property,
please call our Southall branch on

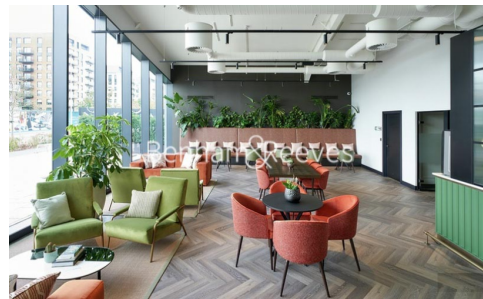
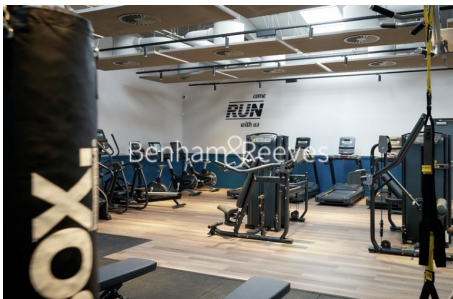
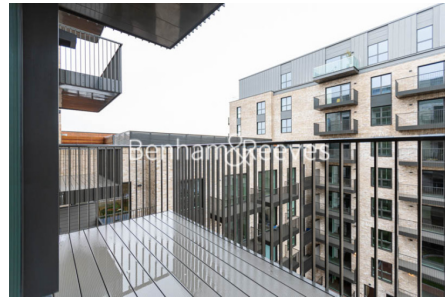
020 8154 1089

Redress & Client Money Protection :

Benham and Reeves are members of The Property Ombudsman redress scheme and have Client Money protection with ARLA Propertymark. You can find more information on our website at <https://www.benhamandreeves.com/membership/>



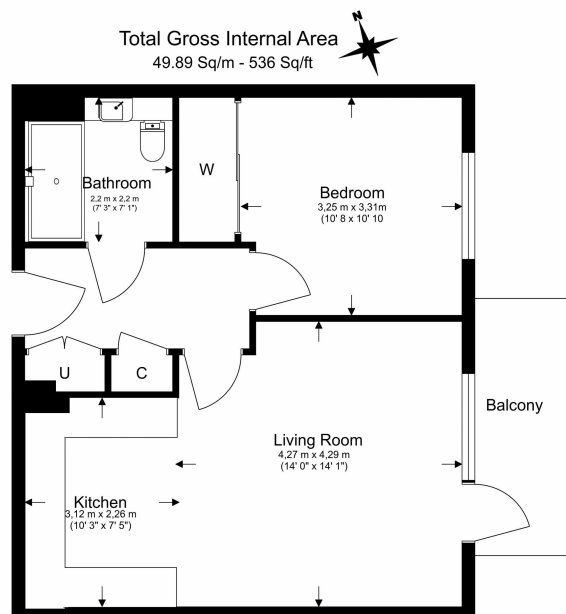
Benham&Reeves



Greenleaf Walk, Southall, UB1

£381 per week, £1,651 per month + fees

www.benhams.com



Floor Plan measurements are approximate and are for illustrative purposes only. While we do not doubt the floor plans accuracy, we make no guarantee, warranty or representation as to the accuracy and completeness of the floor plan.

Score	Energy rating	Current	Potential
92+	A		
81-91	B	85 B	85 B
69-80	C		
55-68	D		
39-54	E		
21-38	F		
1-20	G		

London branches open six days a week Mon - Sat

Canary Wharf | City | Colindale | Dartmouth Park | Ealing | Fulham
Hammersmith | Hampstead | Highgate | Hyde Park | Kensington | Kew
Knightsbridge | Nine Elms | Shoreditch | Southall | Surrey Quays
Wapping | Wembley | White City | Woolwich

International offices

China | Hong Kong SAR | India | Indonesia | Qatar | Malaysia | Middle East |
Singapore | South Africa | Thailand | Turkey



Benham & Reeves