



Benham & Reeves

Accolade Avenue, Southall, UB1

£439 per week, £1,902 per month + fees

 2 Bedrooms  2 Bathrooms  Furnished

This roomy, naturally light 5th floor apartment situated in a biodiverse development surrounded by parkland in West London. Close to Southall Station (Zone 4), a strategic stop on the new super-fast Elizabeth Line. This network connects the area directly to Central London, Canary Wharf and Heathrow Airport.

Please [click here](#) for full detail

Property features

2 Bedrooms | Gym | Residents lounge | Concierge | Large Private Balcony | EPC-B | Wood Floor And Large Floor-To-Ceiling Windows | Cinema room | Nearby Southall Station

For more information about this property,
please call our Southall branch on

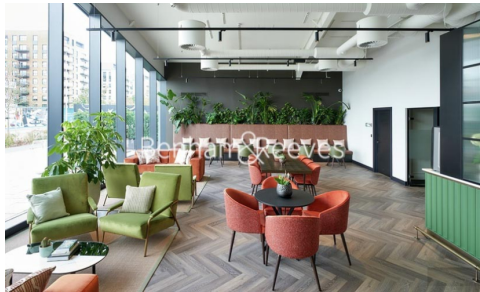
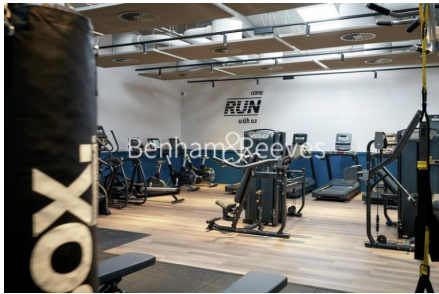
020 8051 0800

Redress & Client Money Protection :

Benham and Reeves are members of The Property Ombudsman redress scheme and have Client Money protection with ARLA Propertymark. You can find more information on our website at <https://www.benhamandreeves.com/membership/>



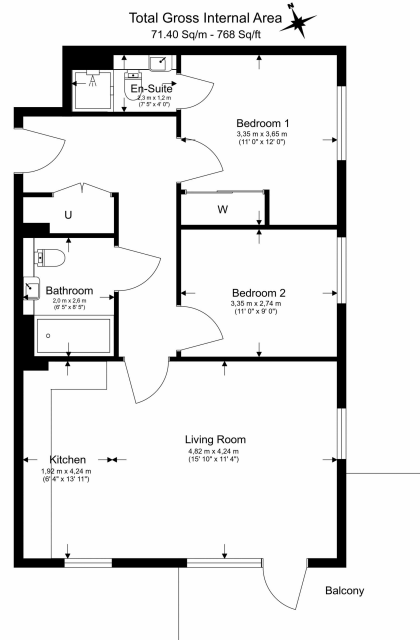
Benham&Reeves



Accolade Avenue, Southall, UB1

£439 per week, £1,902 per month + fees

www.benhams.com



Floor Plan measurements are approximate and are for illustrative purposes only. While we do not doubt the floor plans accuracy, we make no guarantee, warranty or representation as to the accuracy and completeness of the floor plan.

Score	Energy rating	Current	Potential
92+	A		
81-91	B	84 B	84 B
69-80	C		
55-68	D		
39-54	E		
21-38	F		
1-20	G		

London branches open six days a week Mon - Sat

Canary Wharf | City | Colindale | Dartmouth Park | Ealing | Fulham
Hammersmith | Hampstead | Highgate | Hyde Park | Kensington | Kew
Knightsbridge | Nine Elms | Shoreditch | Southall | Surrey Quays
Wapping | Wembley | White City | Woolwich

International offices

China | Hong Kong SAR | India | Israel | Malaysia | Middle East | Pakistan
Qatar | Singapore | South Africa | Thailand | Turkey



Benham & Reeves