



Benham & Reeves

**Accolade Avenue, Southall, UB1**

£462 per week, £2,002 per month + fees

 2 Bedrooms    2 Bathrooms    Furnished

This stunning 5th floor apartment is situated in a stunning development in West London with views overlooking landscaped gardens and surrounding parkland.

Please [click here](#) for full detail

## Property features

**Gym | Concierge | Residents lounge | Cinema room | 5th floor | EPC-B | Balcony | Large Open Plan Reception Room | Wood floors | Southall Station**

For more information about this property,  
please call our Ealing branch on

**020 8280 0140**

Redress & Client Money Protection :

Benham and Reeves are members of The Property Ombudsman redress scheme and have Client Money protection with ARLA Propertymark. You can find more information on our website at <https://www.benhamandreeves.com/membership/>



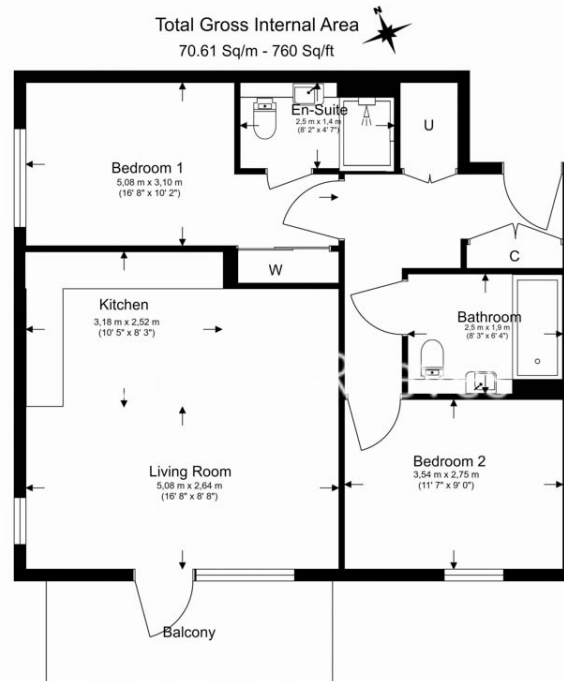
**Benham & Reeves**



# Accolade Avenue, Southall, UB1

£462 per week, £2,002 per month + fees

[www.benhams.com](http://www.benhams.com)



Floor Plan measurements are approximate and are for illustrative purposes only. While we do not doubt the floor plans accuracy, we make no guarantee, warranty or representation as to the accuracy and completeness of the floor plan.

## London branches open six days a week Mon - Sat

Canary Wharf | City | Colindale | Dartmouth Park | Ealing | Fulham  
Hammersmith | Hampstead | Highgate | Hyde Park | Kensington | Kew  
Knightsbridge | Nine Elms | Shoreditch | Southall | Surrey Quays  
Wapping | Wembley | White City | Woolwich

## International offices

China | Hong Kong SAR | India | Indonesia | Qatar | Malaysia | Middle East |  
Singapore | South Africa | Thailand | Turkey



Benham & Reeves