



Benham & Reeves

Accolade Avenue, Southall, UB1

£335 per week, £1,452 per month + fees

 1 Bedroom  1 Bathroom  Furnished

Stunning 3rd floor suite style apartment located in an exciting biodiverse development in West London, a short walk from Southall Station (Zone 4), a strategic stop on the super-fast Elizabeth Line. EPC-B

Please [click here](#) for full detail

Property features

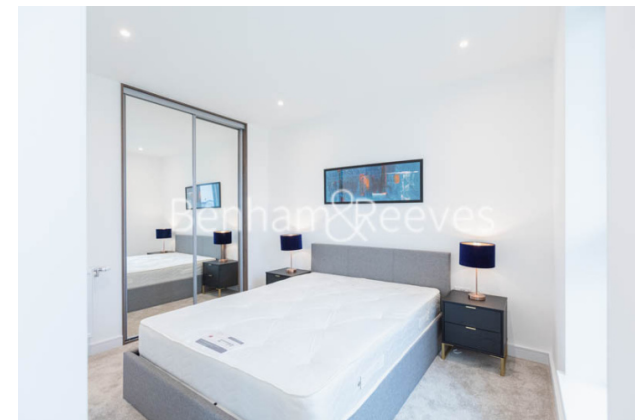
Gym | Suite style apartment | Concierge | Balcony | Wood floors | EPC-B | Cinema room | Residents lounge | Close To Fast Transport Connections | Nearby Southall Station (Zone 4)

For more information about this property, please call our Southall branch on

020 8051 0800

Redress & Client Money Protection :

Benham and Reeves are members of The Property Ombudsman redress scheme and have Client Money protection with ARLA Propertymark. You can find more information on our website at <https://www.benhams.com/membership/>



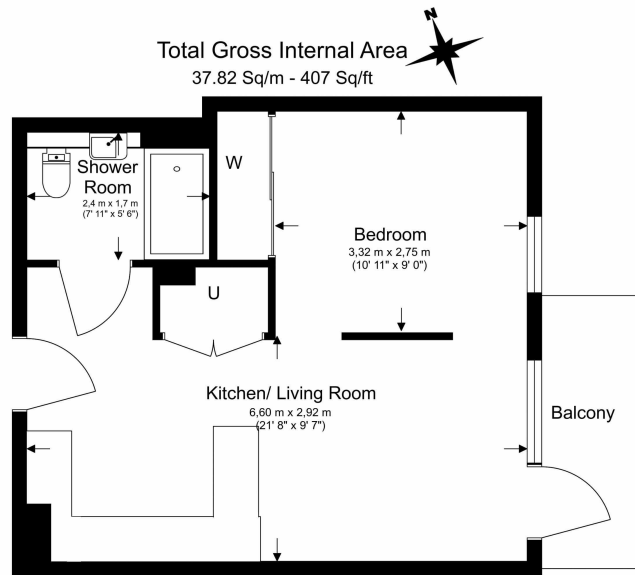
Benham & Reeves



Accolade Avenue, Southall, UB1

£335 per week, £1,452 per month + fees

www.benhams.com



Floor Plan measurements are approximate and are for illustrative purposes only. While we do not doubt the floor plans accuracy, we make no guarantee, warranty or representation as to the accuracy and completeness of the floor plan.

Score	Energy rating	Current	Potential
92+	A		
81-91	B	83 B	83 B
69-80	C		
55-68	D		
39-54	E		
21-38	F		
1-20	G		

London branches open six days a week Mon - Sat

Canary Wharf | City | Colindale | Dartmouth Park | Ealing | Fulham
Hammersmith | Hampstead | Highgate | Hyde Park | Kensington | Kew
Knightsbridge | Nine Elms | Shoreditch | Southall | Surrey Quays
Wapping | Wembley | White City | Woolwich

International offices

China | Hong Kong SAR | India | Indonesia | Qatar | Malaysia | Middle East |
Singapore | South Africa | Thailand | Turkey

