



Benham & Reeves

Accolade Avenue, Southall, UB1

£323 per week, £1,400 per month + fees

 1 Bedroom  1 Bathroom  Furnished

Stylish suite-style 1st floor apartment situated within an exciting biodiverse development in West London, set amongst 13 acres of parkland with over 1km of canal frontage. Located a short walk from Southall Station (Zone 4). EPC-B

Please [click here](#) for full detail

Property features

Gym | Suite style apartment | Concierge | Fully Furnished | Wood floors | EPC-B | Residents lounge | Cinema room | Balcony | Nearby Southall Station

For more information about this property, please call our Southall branch on

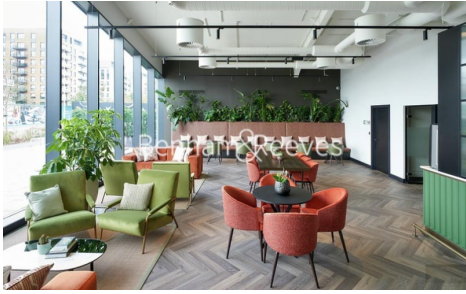
020 8051 0800

Redress & Client Money Protection :

Benham and Reeves are members of The Property Ombudsman redress scheme and have Client Money protection with ARLA Propertymark. You can find more information on our website at <https://www.benhams.com/membership/>



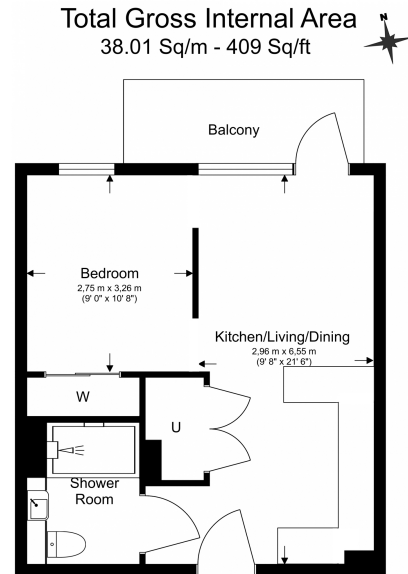
Benham & Reeves



Accolade Avenue, Southall, UB1

£323 per week, £1,400 per month + fees

www.benhams.com



Benham & Reeves

Floor Plan measurements are approximate and are for illustrative purposes only. While we do not doubt the floor plans accuracy, we make no guarantee, warranty or representation as to the accuracy and completeness of the floor plan.

| Score | Energy rating | Current | Potential |
|-------|---------------|---------|-----------|
| 92+ | A | | |
| 81-91 | B | 83 B | 83 B |
| 69-80 | C | | |
| 55-68 | D | | |
| 39-54 | E | | |
| 21-38 | F | | |
| 1-20 | G | | |

London branches open six days a week Mon - Sat

Canary Wharf | City | Colindale | Dartmouth Park | Ealing | Fulham
Hammersmith | Hampstead | Highgate | Hyde Park | Kensington | Kew
Knightsbridge | Nine Elms | Shoreditch | Southall | Surrey Quays
Wapping | Wembley | White City | Woolwich

International offices

China | Hong Kong SAR | India | Indonesia | Qatar | Malaysia | Middle East |
Singapore | South Africa | Thailand | Turkey



Benham & Reeves