



Benham & Reeves

Cedrus Avenue, Southall, UB1

£508 per week, £2,201 per month + fees

 2 Bedrooms  1 Bathroom  Furnished

A brand new two bedroom apartment, with parking, situated in The Green Quarter which is an exciting new property development in West London. Southall Station (Zone 4) is just a short walk away and is a strategic stop on the new super-fast Elizabeth Line.

Please [click here](#) for full detail

Property features

Brand New | Concierge | Gym | Cinema room | Residents Lounge | EPC-B | Wood floors | Balcony | Underground Parking | Nearby Southall Station

For more information about this property,
please call our Southall branch on

020 8051 0800

Redress & Client Money Protection :

Benham and Reeves are members of The Property Ombudsman redress scheme and have Client Money protection with ARLA Propertymark. You can find more information on our website at <https://www.benhams.com/membership/>



Benham&Reeves

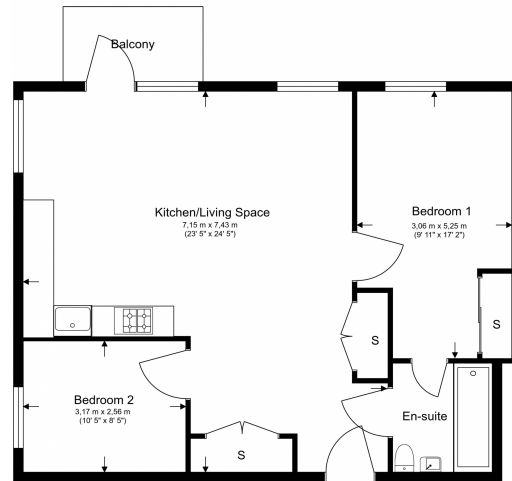


Cedrus Avenue, Southall, UB1

£508 per week, £2,201 per month + fees

www.benhams.com

Third Floor
Total Gross Internal Area
70.3 Sq/m - 756 Sq/ft



Floor Plan measurements are approximate and are for illustrative purposes only. While we do not doubt the floor plans accuracy, we make no guarantee, warranty or representation as to the accuracy and completeness of the floor plan.

Score	Energy rating	Current	Potential
92+	A		
81-91	B	84 B	84 B
69-80	C		
55-68	D		
39-54	E		
21-38	F		
1-20	G		

London branches open six days a week Mon - Sat

Canary Wharf | City | Colindale | Dartmouth Park | Ealing | Fulham
Hammersmith | Hampstead | Highgate | Hyde Park | Kensington | Kew
Knightsbridge | Nine Elms | Shoreditch | Southall | Surrey Quays
Wapping | Wembley | White City | Woolwich

International offices

China | Hong Kong SAR | India | Indonesia | Qatar | Malaysia | Middle East | Pakistan
Singapore | South Africa | Thailand | Turkey



Benham & Reeves