



Benham & Reeves

Cedrus Avenue, Southall, UB1

£404 per week, £1,751 per month + fees

🛏 1 Bedroom 🚿 1 Bathroom 🚗 Furnished

This desirable 5th floor apartment, with parking, is situated in an exciting biodiverse development by Berkley on the Western fringe of London featuring great views of the surrounding landscaped gardens. Southall Station (Zone 4), a strategic stop on the fast Elizabeth line, is within a brief walk.

Please [click here](#) for full detail

Property features

Underground parking | Concierge | Gym | Cinema room | Residents lounge | EPC-B | Balcony | Wood floors | Furnished | Nearby Southall Station

For more information about this property,
please call our Property Management branch on

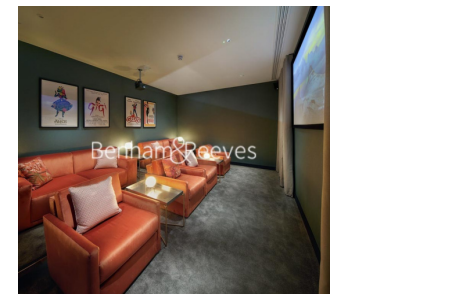
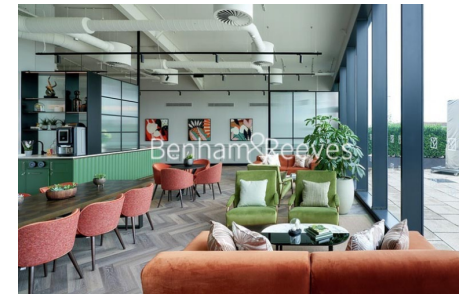
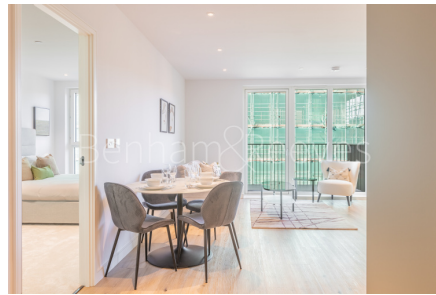
020 7319 9740

Redress & Client Money Protection :

Benham and Reeves are members of The Property Ombudsman redress scheme and have Client Money protection with ARLA Propertymark. You can find more information on our website at <https://www.benhamandreeves.com/membership/>



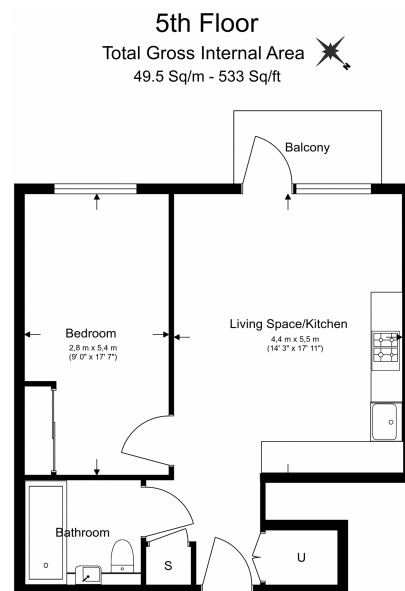
Benham&Reeves



Cedrus Avenue, Southall, UB1

£404 per week, £1,751 per month + fees

www.benhams.com



Floor Plan measurements are approximate and are for illustrative purposes only. While we do not doubt the floor plans accuracy, we make no guarantee, warranty or representation as to the accuracy and completeness of the floor plan.

Score	Energy rating	Current	Potential
92+	A		
81-91	B	84 B	84 B
69-80	C		
55-68	D		
39-54	E		
21-38	F		
1-20	G		

London branches open six days a week Mon - Sat

Canary Wharf | City | Colindale | Dartmouth Park | Ealing | Fulham
Hammersmith | Hampstead | Highgate | Hyde Park | Kensington | Kew
Knightsbridge | Nine Elms | Shoreditch | Southall | Surrey Quays
Wapping | Wembley | White City | Woolwich

International offices

China | Hong Kong SAR | India | Indonesia | Qatar | Malaysia | Middle East |
Singapore | South Africa | Thailand | Turkey



Benham & Reeves