



Benham & Reeves

**Cedrus Avenue, Southall, UB1**

£508 per week, £2,201 per month + fees

 2 Bedrooms    2 Bathrooms    Furnished

Brand-new two bedroom apartment, situated in an exciting regeneration biodiverse development in West London. A short walk from Southall Station (Zone 4), a strategic stop on the new super-fast Elizabeth Line.

Please [click here](#) for full detail

## Property features

**Brand new | Concierge | Gym | Cinema room | Residents Lounge | EPC-B | Wood floors | Balcony | Furnished | Southall Station**

For more information about this property,  
please call our Southall branch on

**020 8051 0800**

Redress & Client Money Protection :

Benham and Reeves are members of The Property Ombudsman redress scheme and have Client Money protection with ARLA Propertymark. You can find more information on our website at <https://www.benhamandreeves.com/membership/>



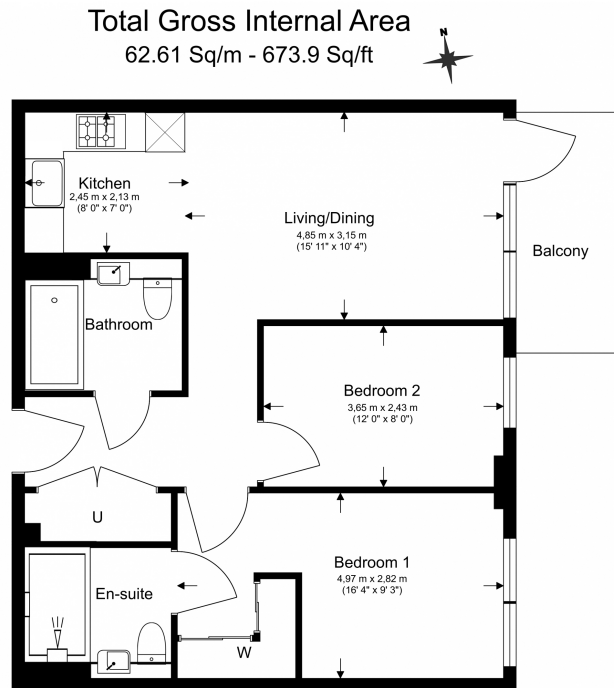
Benham & Reeves



# Cedrus Avenue, Southall, UB1

£508 per week, £2,201 per month + fees

[www.benhams.com](http://www.benhams.com)



Floor Plan measurements are approximate and are for illustrative purposes only. While we do not doubt the floor plans accuracy, we make no guarantee, warranty or representation as to the accuracy and completeness of the floor plan.

## London branches open six days a week Mon - Sat

Canary Wharf | City | Colindale | Dartmouth Park | Ealing | Fulham  
Hammersmith | Hampstead | Highgate | Hyde Park | Kensington | Kew  
Knightsbridge | Nine Elms | Shoreditch | Southall | Surrey Quays  
Wapping | Wembley | White City | Woolwich

## International offices

China | Hong Kong SAR | India | Israel | Malaysia | Middle East | Pakistan  
Qatar | Singapore | South Africa | Thailand | Turkey



Benham & Reeves