



Benham & Reeves

## **Cedrus Avenue, Southall, UB1**

£485 per week, £2,102 per month + fees

 2 Bedrooms    2 Bathrooms    Furnished

A brand-new apartment situated in one of the most biodiverse regeneration projects in West London. Southall Station (Zone 4) is a brief walk away and is a strategic stop on the new super-fast Elizabeth Line.

Please [click here](#) for full detail

## Property features

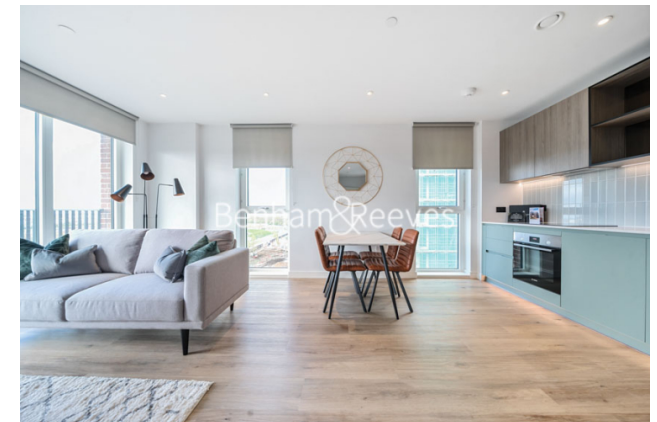
**Brand new | Concierge | Gym | Cinema room | Residents Lounge | EPC-B | Wood floors | Balcony | Furnished | Close to Southall station (Elizabeth line)**

For more information about this property,  
please call our Southall branch on

**020 8154 1089**

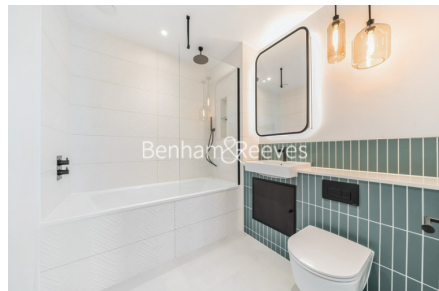
Redress & Client Money Protection :

Benham and Reeves are members of The Property Ombudsman redress scheme and have Client Money protection with ARLA Propertymark. You can find more information on our website at <https://www.benhamandreeves.com/membership/>



Benham & Reeves

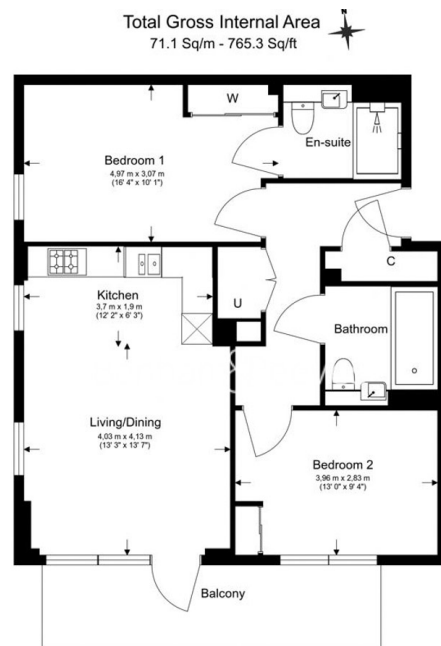




# Cedrus Avenue, Southall, UB1

£485 per week, £2,102 per month + fees

www.benhams.com



Floor Plan measurements are approximate and are for illustrative purposes only. While we do not doubt the floor plans accuracy, we make no guarantee, warranty or representation as to the accuracy and completeness of the floor plan.

Score	Energy rating	Current	Potential
92+	A		
81-91	B	84 B	84 B
69-80	C		
55-68	D		
39-54	E		
21-38	F		
1-20	G		

## London branches open six days a week Mon - Sat

Canary Wharf | City | Colindale | Dartmouth Park | Ealing | Fulham  
Hammersmith | Hampstead | Highgate | Hyde Park | Kensington | Kew  
Knightsbridge | Nine Elms | Shoreditch | Southall | Surrey Quays  
Wapping | Wembley | White City | Woolwich

## International offices

China | Hong Kong SAR | India | Indonesia | Qatar | Malaysia | Middle East |  
Singapore | South Africa | Thailand | Turkey



Benham & Reeves