



Benham & Reeves

**Accolade Avenue, Southall, UB1**

£242 per week, £1,049 per month + fees

 1 Bedroom    1 Bathroom    Furnished

This conveniently located 3rd floor suite style apartment is situated in an outstanding Berkeley development on the Western fringe of London featuring great views of the surrounding landscaped gardens. Perfectly located for Southall amenities and Southall British Rail Station.

Please [click here](#) for full detail

## Property features

**Brand New | Suite Style Apartment | Concierge | Balcony | Wood floors | EPC-B | Open Plan Design | Well-Equipped Kitchen | Southall British Rail Station**

For more information about this property,  
please call our Ealing branch on

**020 8280 0140**

Redress & Client Money Protection :

Benham and Reeves are members of The Property Ombudsman redress scheme and have Client Money protection with ARLA Propertymark. You can find more information on our website at <https://www.benhams.com/membership/>



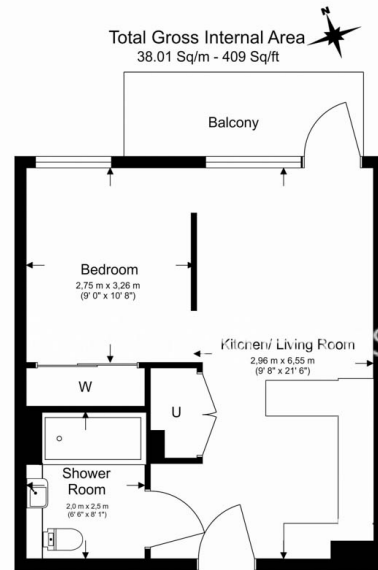
**Benham & Reeves**



# Accolade Avenue, Southall, UB1

£242 per week, £1,049 per month + fees

www.benhams.com



Floor Plan measurements are approximate and are for illustrative purposes only. While we do not doubt the floor plans accuracy, we make no guarantee, warranty or representation as to the accuracy and completeness of the floor plan.

Score	Energy rating	Current	Potential
92+	A		
81-91	B	83   B	83   B
69-80	C		
55-68	D		
39-54	E		
21-38	F		
1-20	G		

## London branches open six days a week Mon - Sat

Canary Wharf | City | Colindale | Dartmouth Park | Ealing | Fulham  
Hammersmith | Hampstead | Highgate | Hyde Park | Kensington | Kew  
Knightsbridge | Nine Elms | Shoreditch | Southall | Surrey Quays  
Wapping | Wembley | White City | Woolwich

## International offices

China | Hong Kong SAR | India | Indonesia | Qatar | Malaysia | Middle East |  
Singapore | South Africa | Thailand | Turkey



Benham & Reeves