



Benham & Reeves

Greenleaf Walk, Southall, UB1

£381 per week, £1,651 per month + fees

 1 Bedroom  1 Bathroom  Furnished

This stunning 4th floor apartment is situated in an outstanding development on the in Western fringe of London featuring great views of the surrounding landscaped gardens. Southall Station (Elizabeth line) is within a short walk from the property

Please [click here](#) for full detail

Property features

One Bedroom | One Bathroom | Cinema room | Gym | Concierge | EPC-B | Balcony | Wood floors | Residents lounge | Nearby Southall Station (Zone 4)

For more information about this property,
please call our Southall branch on

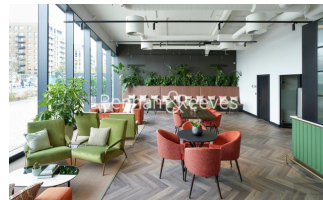
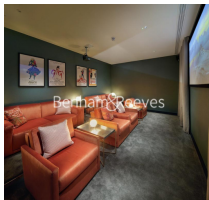
020 8051 0800

Redress & Client Money Protection :

Benham and Reeves are members of The Property Ombudsman redress scheme and have Client Money protection with ARLA Propertymark. You can find more information on our website at <https://www.benhamandreeves.com/membership/>



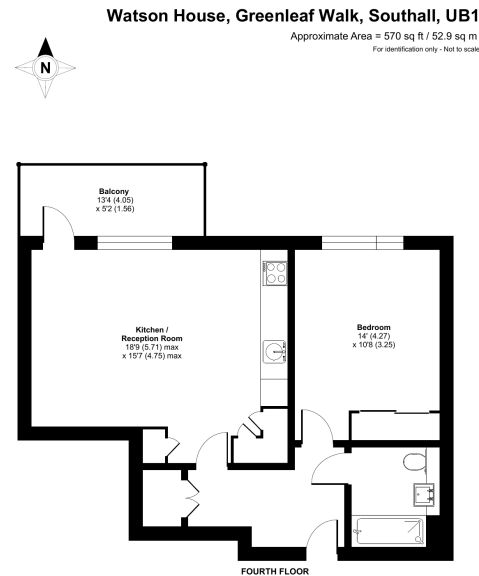
Benham & Reeves



Greenleaf Walk, Southall, UB1

£381 per week, £1,651 per month + fees

www.benhams.com



Certified Property Measure
Floor plan produced in accordance with RICS Property Measurement Standards incorporating International Property Measurement Standards (IPMS) (Residential). © Benham & Reeves 2022
Produced for Benham & Reeves. REF: 1140122

Score	Energy rating	Current	Potential
92+	A		
81-91	B	84 B	84 B
69-80	C		
55-68	D		
39-54	E		
21-38	F		
1-20	G		

London branches open six days a week Mon - Sat

Canary Wharf | City | Colindale | Dartmouth Park | Ealing | Fulham
Hammersmith | Hampstead | Highgate | Hyde Park | Kensington | Kew
Knightsbridge | Nine Elms | Shoreditch | Southall | Surrey Quays
Wapping | Wembley | White City | Woolwich

International offices

China | Hong Kong SAR | India | Indonesia | Qatar | Malaysia | Middle East | Pakistan
Singapore | South Africa | Thailand | Turkey



Benham & Reeves