



Benham & Reeves

Cedrus Avenue, Southall, UB1

£393 per week, £1,703 per month + fees

 1 Bedroom  1 Bathroom  Unfurnished

This brand new 3rd floor apartment is situated within an outstanding new Berkeley development on the in Western fringe of London featuring great views of the surrounding landscaped gardens. Southall Station (Zone 4) is a short walk away and is a strategic stop on the new super-fast Elizabeth Line. This network connects the area directly to Central London, Canary Wharf and Heathrow Airport.

Please [click here](#) for full detail

Property features

Brand new | Concierge | Gym | Cinema room | Residents lounge | EPC-B | Balcony | Wood floors | Unfurnished | Southall Station

For more information about this property,
please call our Property Management branch on

020 7319 9740

Redress & Client Money Protection :

Benham and Reeves are members of The Property Ombudsman redress scheme and have Client Money protection with ARLA Propertymark. You can find more information on our website at <https://www.benhamandreeves.com/membership/>



Benham & Reeves

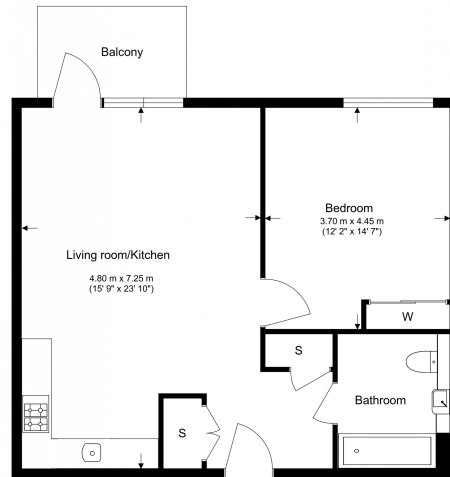


Cedrus Avenue, Southall, UB1

£393 per week, £1,703 per month + fees

www.benhams.com

Total Gross Internal Area
62.4 Sq/m - 672 Sq/ft



Floor Plan measurements are approximate and are for illustrative purposes only. While we do not doubt the floor plans accuracy, we make no guarantee, warranty or representation as to the accuracy and completeness of the floor plan.

Score	Energy rating	Current	Potential
92+	A		
81-91	B	84 B	84 B
69-80	C		
55-68	D		
39-54	E		
21-38	F		
1-20	G		

London branches open six days a week Mon - Sat

Canary Wharf | City | Colindale | Dartmouth Park | Ealing | Fulham
Hammersmith | Hampstead | Highgate | Hyde Park | Kensington | Kew
Knightsbridge | Nine Elms | Shoreditch | Southall | Surrey Quays
Wapping | Wembley | White City | Woolwich

International offices

China | Hong Kong SAR | India | Indonesia | Qatar | Malaysia | Middle East |
Singapore | South Africa | Thailand | Turkey



Benham & Reeves