



Benham & Reeves

Cedrus Avenue, Southall, UB1

£507 per week, £2,197 per month + fees

 2 Bedrooms  2 Bathrooms  Furnished

This stunning 7th floor apartment, with Parking, is situated in an outstanding biodiverse Berkeley development on the in Western fringe of London featuring great views of the surrounding landscaped gardens. Located a brief walk from Southall Station (Zone 4) a strategic stop on the super-fast Elizabeth Line.

Please [click here](#) for full detail

Property features

Concierge | Gym | Cinema Room | Residents Lounge | Balcony | EPC-B | Allocated Parking | Furnished | Available Now | Nearby Southall Station

For more information about this property,
please call our Property Management branch on

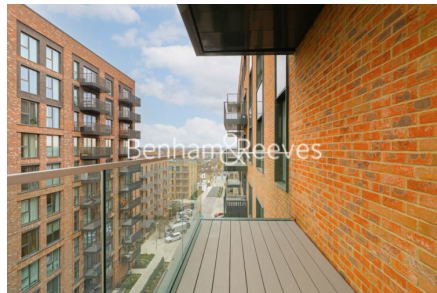
020 7319 9740

Redress & Client Money Protection :

Benham and Reeves are members of The Property Ombudsman redress scheme and have Client Money protection with ARLA Propertymark. You can find more information on our website at <https://www.benhamandreeves.com/membership/>



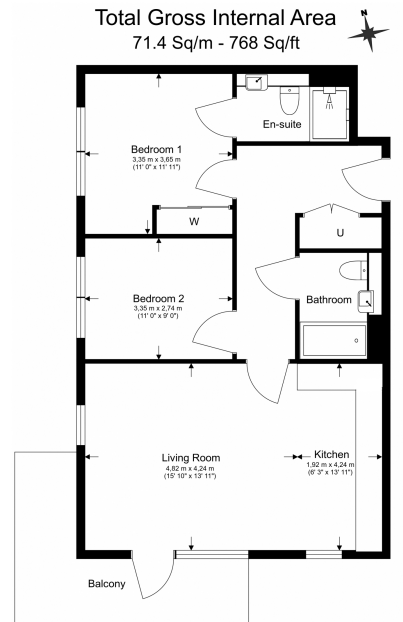
Benham & Reeves



Cedrus Avenue, Southall, UB1

£507 per week, £2,197 per month + fees

www.benhams.com



Floor Plan measurements are approximate and are for illustrative purposes only. While we do not doubt the floor plans accuracy, we make no guarantee, warranty or representation as to the accuracy and completeness of the floor plan.

Score	Energy rating	Current	Potential
92+	A		
81-91	B	84 B	84 B
69-80	C		
55-68	D		
39-54	E		
21-38	F		
1-20	G		

London branches open six days a week Mon - Sat

Canary Wharf | City | Colindale | Dartmouth Park | Ealing | Fulham
Hammersmith | Hampstead | Highgate | Hyde Park | Kensington | Kew
Knightsbridge | Nine Elms | Shoreditch | Southall | Surrey Quays
Wapping | Wembley | White City | Woolwich

International offices

China | Hong Kong SAR | India | Indonesia | Qatar | Malaysia | Middle East |
Singapore | South Africa | Thailand | Turkey



Benham & Reeves