



Benham & Reeves

Greenleaf Walk, Southall, UB1

£623 per week, £2,700 per month + fees

 3 Bedrooms  2 Bathrooms  Furnished

This stunning 12th floor apartment, with parking, is situated an exciting development in West London with views overlooking landscaped gardens and surrounding parkland. A brief walk from Southall Station.

Please [click here](#) for full detail

Property features

Three Bedrooms | Two Bathrooms | Reception | Underground parking | Concierge | EPC-B | Gym | Cinema room | Residents lounge | Nearby Southall Station (Zone 4)

For more information about this property,
please call our Southall branch on

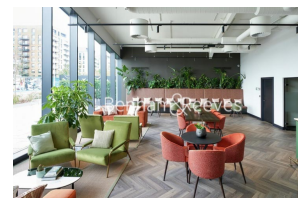
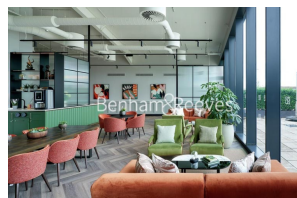
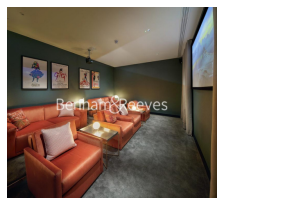
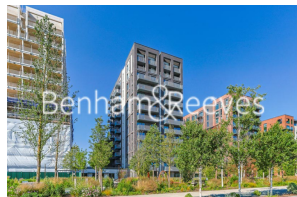
020 8051 0800

Redress & Client Money Protection :

Benham and Reeves are members of The Property Ombudsman redress scheme and have Client Money protection with ARLA Propertymark. You can find more information on our website at <https://www.benhamandreeves.com/membership/>



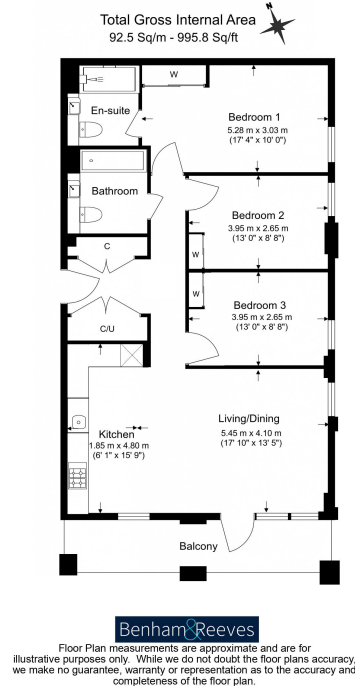
Benham&Reeves



Greenleaf Walk, Southall, UB1

£623 per week, £2,700 per month + fees

www.benhams.com



Score	Energy rating	Current	Potential
92+	A		
81-91	B	84 B	84 B
69-80	C		
55-68	D		
39-54	E		
21-38	F		
1-20	G		

London branches open six days a week Mon - Sat

Canary Wharf | City | Colindale | Dartmouth Park | Ealing | Fulham
Hammersmith | Hampstead | Highgate | Hyde Park | Kensington | Kew
Knightsbridge | Nine Elms | Shoreditch | Southall | Surrey Quays
Wapping | Wembley | White City | Woolwich

International offices

China | Hong Kong SAR | India | Indonesia | Qatar | Malaysia | Middle East | Pakistan
Singapore | South Africa | Thailand | Turkey



Benham & Reeves