



Benham & Reeves

Samara Drive, Southall, UB1

£381 per week, £1,651 per month + fees

 1 Bedroom  1 Bathroom  Furnished

Stunning apartment situated within an outstanding bio-diverse Berkeley development on the Western fringe of London featuring great views of the surrounding landscaped gardens. Southall Station (Zone 4), a strategic stop on the super-fast Elizabeth Line.

Please [click here](#) for full detail

Property features

Brand new | 24hr concierge | Gym | Cinema room | Residents lounge | EPC- B | Meeting room | Balcony | Western fringe | Nearby Southall Station (Zone 4)

For more information about this property,
please call our Southall branch on

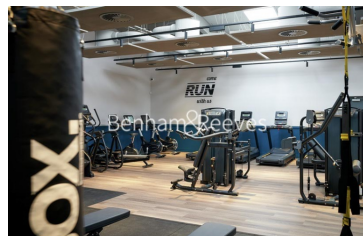
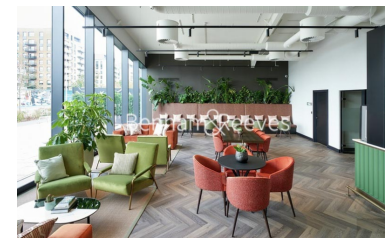
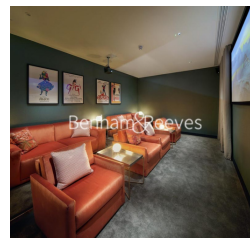
020 8051 0800

Redress & Client Money Protection :

Benham and Reeves are members of The Property Ombudsman redress scheme and have Client Money protection with ARLA Propertymark. You can find more information on our website at <https://www.benhams.com/membership/>



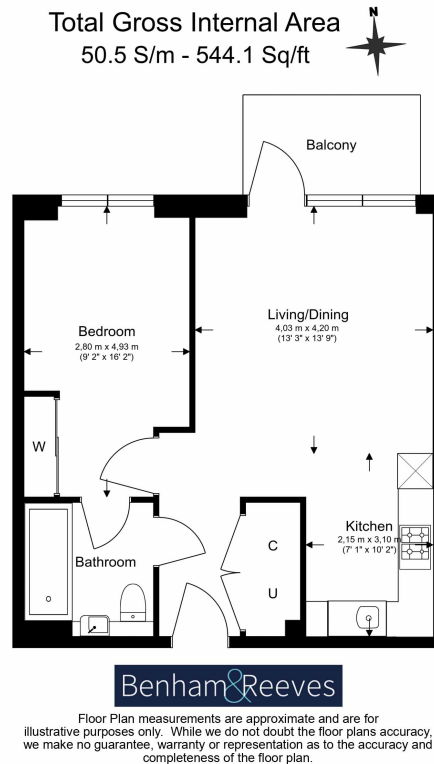
Benham & Reeves



Samara Drive, Southall, UB1

£381 per week, £1,651 per month + fees

www.benhams.com



London branches open six days a week Mon - Sat

Canary Wharf | City | Colindale | Dartmouth Park | Ealing | Fulham
Hammersmith | Hampstead | Highgate | Hyde Park | Kensington | Kew
Knightsbridge | Nine Elms | Shoreditch | Southall | Surrey Quays
Wapping | Wembley | White City | Woolwich

International offices

China | Hong Kong SAR | India | Indonesia | Qatar | Malaysia | Middle East | Pakistan
Singapore | South Africa | Thailand | Turkey



Benham & Reeves