



Benham & Reeves

Greenleaf Walk, Southall, UB1

£347 per week, £1,504 per month + fees

 1 Bedroom  1 Bathroom  Furnished

Stylish suite style 6th floor apartment situated in an exciting biodiverse development in West London, designed along a revitalised canalside and parkland. Well-located for Southall British Rail.

Please [click here](#) for full detail

Property features

Suite style apartment | Concierge | Gym | Cinema room | Residents lounge | EPC-B | Generously Proportioned Balcony | Well-Equipped Kitchen | Full Height Windows | Nearby Southall amenities and Southall British Rail Station

For more information about this property,
please call our Southall branch on

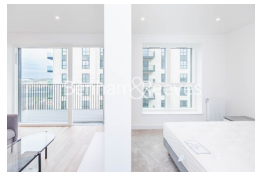
020 8154 1089

Redress & Client Money Protection :

Benham and Reeves are members of The Property Ombudsman redress scheme and have Client Money protection with ARLA Propertymark. You can find more information on our website at <https://www.benhamandreeves.com/membership/>



Benham & Reeves

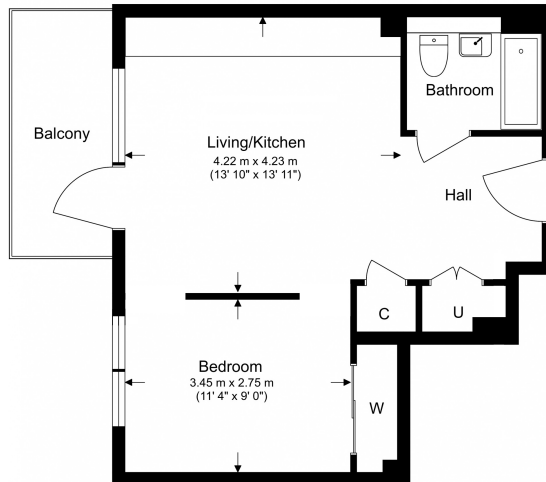


Greenleaf Walk, Southall, UB1

£347 per week, £1,504 per month + fees

www.benhams.com

Total Gross Internal Area
40.8 Sq/m - 439 Sq/ft



Floor Plan measurements are approximate and are for illustrative purposes only. While we do not doubt the floor plans accuracy, we make no guarantee, warranty or representation as to the accuracy and completeness of the floor plan.

Score	Energy rating	Current	Potential
92+	A		
81-91	B	83 B	83 B
69-80	C		
55-68	D		
39-54	E		
21-38	F		
1-20	G		

London branches open six days a week Mon - Sat

Canary Wharf | City | Colindale | Dartmouth Park | Ealing | Fulham
Hammersmith | Hampstead | Highgate | Hyde Park | Kensington | Kew
Knightsbridge | Nine Elms | Shoreditch | Southall | Surrey Quays
Wapping | Wembley | White City | Woolwich

International offices

China | Hong Kong SAR | India | Indonesia | Qatar | Malaysia | Middle East |
Singapore | South Africa | Thailand | Turkey



Benham & Reeves