



Benham & Reeves

Greenleaf Walk, Southall, UB1

£370 per week, £1,603 per month + fees

 1 Bedroom  1 Bathroom  Furnished

A stunning 8th floor open planned apartment, with parking, situated in an outstanding Berkeley development on the Western fringe of London featuring great views of the surrounding landscaped gardens. Southall amenities and Southall British Rail Station is within a short walk.

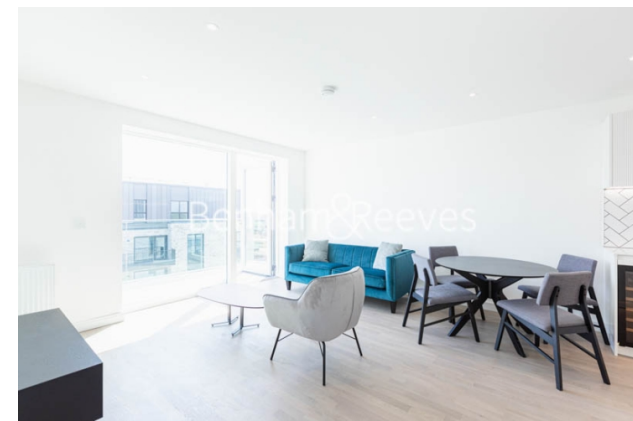
Please [click here](#) for full detail

Property features

Underground parking | Concierge | Gym | Cinema room | Residents lounge | EPC-B | Balcony | Furnished | Eighth floor | Southall British Rail Station

For more information about this property,
please call our Ealing branch on

020 8280 0140



Redress & Client Money Protection :

Benham and Reeves are members of The Property Ombudsman redress scheme and have Client Money protection with ARLA Propertymark. You can find more information on our website at <https://www.benhams.com/membership/>

Benham & Reeves



Greenleaf Walk, Southall, UB1

£370 per week, £1,603 per month + fees

www.benhams.com

Score	Energy rating	Current	Potential
92+	A		
81-91	B	81 B	81 B
69-80	C		
55-68	D		
39-54	E		
21-38	F		
1-20	G		

London branches open six days a week Mon - Sat

Canary Wharf | City | Colindale | Dartmouth Park | Ealing | Fulham
Hammersmith | Hampstead | Highgate | Hyde Park | Kensington | Kew
Knightsbridge | Nine Elms | Shoreditch | Southall | Surrey Quays
Wapping | Wembley | White City | Woolwich

International offices

China | Hong Kong SAR | India | Israel | Malaysia | Middle East | Pakistan
Qatar | Singapore | South Africa | Thailand | Turkey

