



Benham & Reeves

Healum Avenue, Southall, UB1

£370 per week, £1,603 per month + fees

🛏 2 Bedrooms 🚿 2 Bathrooms 🛋
Furnished/UnFurnished

New spacious 7th floor apartment situated within an exciting new development in West London, close to fast transport connections. Perfectly located within walking distance of Southall British Rail Station and to Southall amenities.

Please [click here](#) for full detail

Property features

Brand new | Balcony | Wood floors | Large Open Plan Reception | Wood Floor | EPC-B | Large Windows | Fully Fitted Modern Kitchen | Southall amenities | Nearby Southall British Rail Station

For more information about this property,
please call our Ealing branch on

020 8280 0140

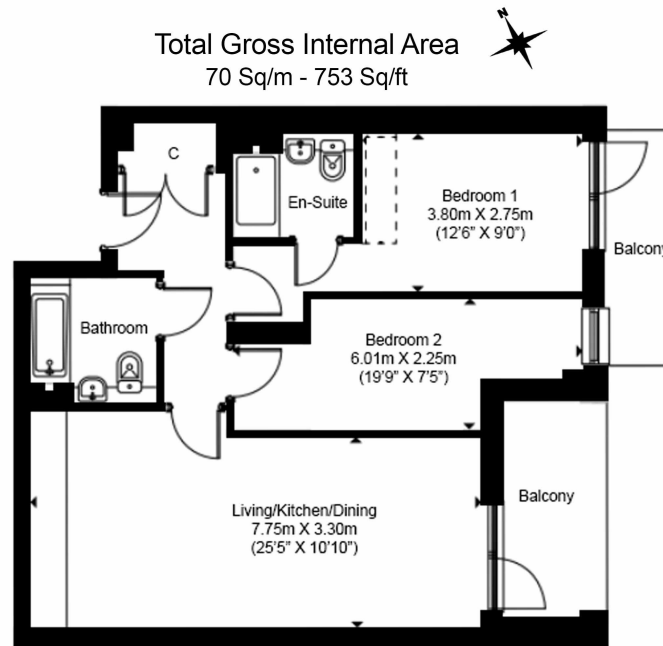




Healum Avenue, Southall, UB1

£370 per week, £1,603 per month + fees

www.benhams.com



Floor Plan measurements are approximate and are for illustrative purposes only. While we do not doubt the floor plans accuracy, we make no guarantee, warranty or representation as to the accuracy and completeness of the floor plan.

London branches open six days a week Mon - Sat

Canary Wharf | City | Colindale | Dartmouth Park | Ealing | Fulham
Hammersmith | Hampstead | Highgate | Hyde Park | Kensington | Kew
Knightsbridge | Nine Elms | Shoreditch | Southall | Surrey Quays
Wapping | Wembley | White City | Woolwich

International offices

China | Hong Kong SAR | India | Indonesia | Qatar | Malaysia | Middle East | Pakistan
Singapore | South Africa | Thailand | Turkey



Benham & Reeves