



Benham & Reeves

Casson Square, Southbank Place, SE1

£692 per week, £3,000 per month + fees

 Studio  1 Bathroom  Furnished

Luxury Studio Apartment located in a desirable development with good resident facilities on the doorstep of Waterloo Station (0.2 miles) and moments from the iconic London Eye.

Please [click here](#) for full detail

Property features

Luxury Studio Apartment | Bespoke Family Size Bathroom | Fitted Kitchen | Furnished | Underfloor Heating | EPC-B | 24-Hour Concierge, Residents Gym & Swimming Pool, Spa | Floor to Ceiling Windows | Waterloo Station Nearby

For more information about this property,
please call our City branch on

020 7213 9700

Redress & Client Money Protection :

Benham and Reeves are members of The Property Ombudsman redress scheme and have Client Money protection with ARLA Propertymark. You can find more information on our website at <https://www.benhams.com/membership/>



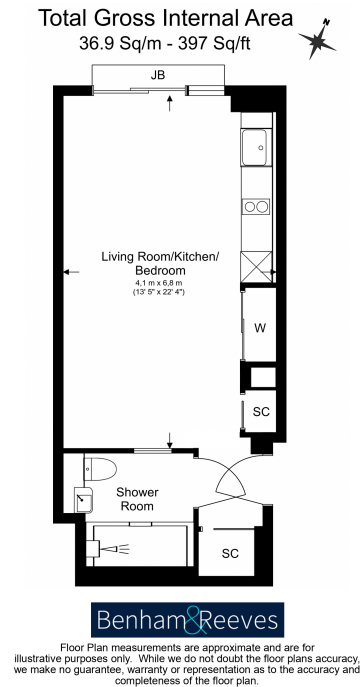
Benham & Reeves



Casson Square, Southbank Place, SE1

£692 per week, £3,000 per month + fees

www.benhams.com



Score	Energy rating	Current	Potential
92+	A		
81-91	B	84 B	84 B
69-80	C		
55-68	D		
39-54	E		
21-38	F		
1-20	G		

London branches open six days a week Mon - Sat

Canary Wharf | City | Colindale | Dartmouth Park | Ealing | Fulham
Hammersmith | Hampstead | Highgate | Hyde Park | Kensington | Kew
Knightsbridge | Nine Elms | Shoreditch | Southall | Surrey Quays
Wapping | Wembley | White City | Woolwich

International offices

China | Hong Kong SAR | India | Indonesia | Qatar | Malaysia | Middle East | Pakistan
Singapore | South Africa | Thailand | Turkey



Benham & Reeves