



Benham & Reeves

Casson Square, Southbank Place, SE1

£1,200 per week, £5,200 per month + fees

 2 Bedrooms  2 Bathrooms  Furnished

Large and bright apartment set in Southbank Place in 30 Casson Square with good security.

Please [click here](#) for full detail

Property features

Luxury 2 Bedroom Apartment | Bespoke Bathroom & En-Suite | Open Plan Living Space | Fitted Kitchen | Furnished | EPC-B | Wooden Flooring Throughout | 24-Hour Concierge & Residents & Lounge | Waterloo Station Nearby

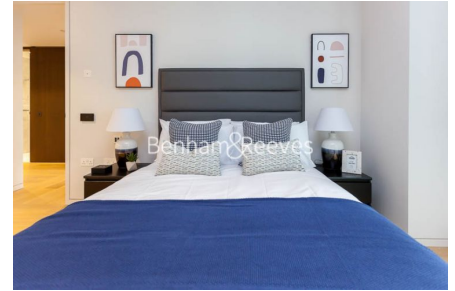
For more information about this property,
please call our City branch on

020 7213 9700



Redress & Client Money Protection :
Benham and Reeves are members of The Property Ombudsman redress scheme and have Client Money protection with ARLA Propertymark.
You can find more information on our website at <https://www.benhams.com/membership/>

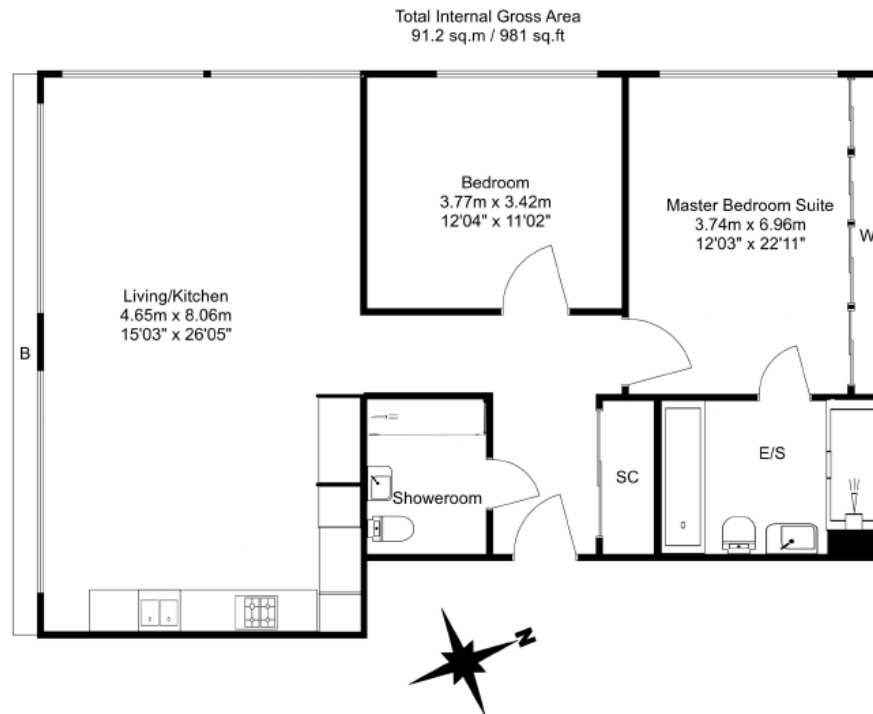
Benham & Reeves



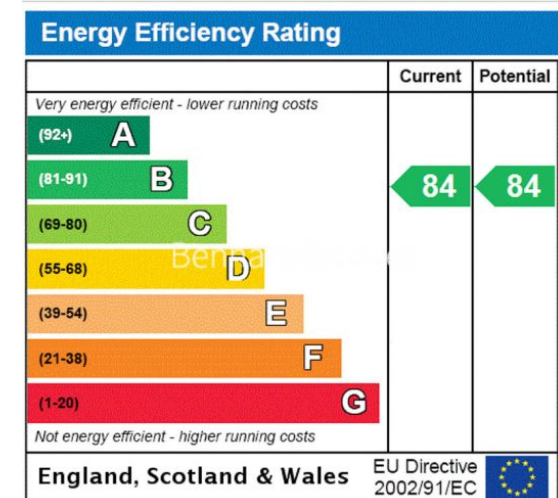
Casson Square, Southbank Place, SE1

£1,200 per week, £5,200 per month + fees

www.benhams.com



Floor Plan measurements are approximate and are for illustrative purposes only. While we do not doubt the floor plans accuracy, we make no guarantee, warranty or representation as to the accuracy and completeness of the floor plan.



London branches open six days a week Mon - Sat

Canary Wharf | City | Colindale | Dartmouth Park | Ealing | Fulham
Hammersmith | Hampstead | Highgate | Hyde Park | Kensington | Kew
Knightsbridge | Nine Elms | Shoreditch | Southall | Surrey Quays
Wapping | Wembley | White City | Woolwich

International offices

China | Hong Kong SAR | India | Israel | Malaysia | Middle East | Pakistan
Qatar | Singapore | South Africa | Thailand | Turkey



Benham & Reeves