



Benham & Reeves

Tower Mill Road, Southwark, SE15

£346 per week, £1,500 per month + fees

🛏️ 1 Bedroom 🚿 1 Bathroom 🛋️ Furnished

Stylish top-floor one-bedroom apartment in a peaceful Zone 2 development near Shad Thames. Bright open-plan living with Juliet balconies, modern finishes, and excellent transport links from Peckham Rye Station.

Please [click here](#) for full detail

Property features

Top-floor contemporary one-bedroom apartment | Peaceful and quiet Tower Mill development | Bright open-plan living space | Juliet balconies in living room and bedroom | Modern integrated kitchen appliances | EPC-C | Stylish bathroom with bathtub and shower | Zone 2 location with excellent transport links | Close to Shad Thames amenities, cafés, gyms & shops | Moments from Peckham Rye Station (Overground & Thameslink)

For more information about this property,
please call our Property Management branch on

020 7319 9740

Redress & Client Money Protection :

Benham and Reeves are members of The Property Ombudsman redress scheme and have Client Money protection with ARLA Propertymark. You can find more information on our website at <https://www.benhamandreeves.com/membership/>



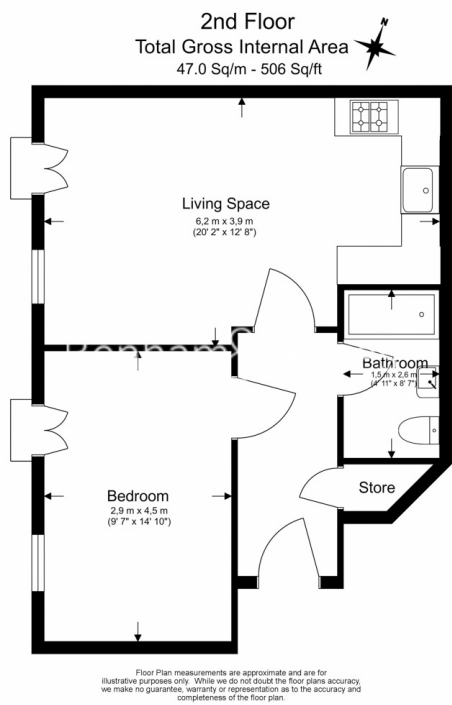
Benham & Reeves



Tower Mill Road, Southwark, SE15

£346 per week, £1,500 per month + fees

www.benhams.com



Score	Energy rating	Current	Potential
92+	A		
81-91	B		
69-80	C	77 c	79 c
55-68	D		
39-54	E		
21-38	F		
1-20	G		

London branches open six days a week Mon - Sat

Canary Wharf | City | Colindale | Dartmouth Park | Ealing | Fulham
Hammersmith | Hampstead | Highgate | Hyde Park | Kensington | Kew
Knightsbridge | Nine Elms | Shoreditch | Southall | Surrey Quays
Wapping | Wembley | White City | Woolwich

International offices

China | Hong Kong SAR | India | Indonesia | Qatar | Malaysia | Middle East |
Singapore | South Africa | Thailand | Turkey

