



Benham & Reeves

Boydell Court, St John's Wood, NW8

£2,750 per week, £11,917 per month + fees

 5 Bedrooms  4 Bathrooms  Furnished

A large, air-conditioned, interior designed duplex penthouse set over the 8th and 9th floors of a luxury purpose-built close to the gorgeous grounds of Primrose Hill. Ideally located near multiple transport links including Swiss Cottage Underground Station (Jubilee Line), South Hampstead (Overground Line) & Finchley Road Tube Station (Jubilee & Metropolitan Line).

Please [click here](#) for full detail

Property features

5 Bedrooms | 4 Bathrooms | 2 Receptions | Furnished | Fitted Kitchen | EPC-C | 24-Hour Porter | Air-Conditioning | Swiss Cottage Underground Station (Jubilee Line)

For more information about this property,
please call our Hampstead branch on

020 7435 9681

Redress & Client Money Protection :

Benham and Reeves are members of The Property Ombudsman redress scheme and have Client Money protection with ARLA Propertymark. You can find more information on our website at <https://www.benhams.com/membership/>



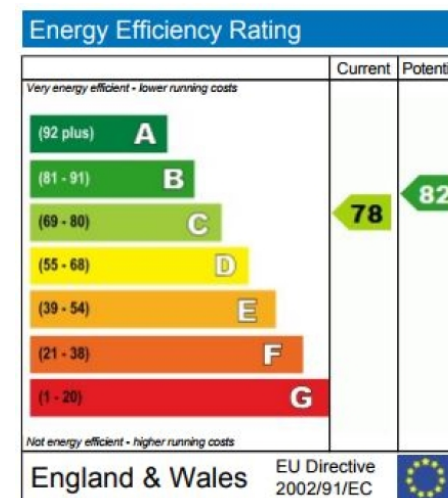
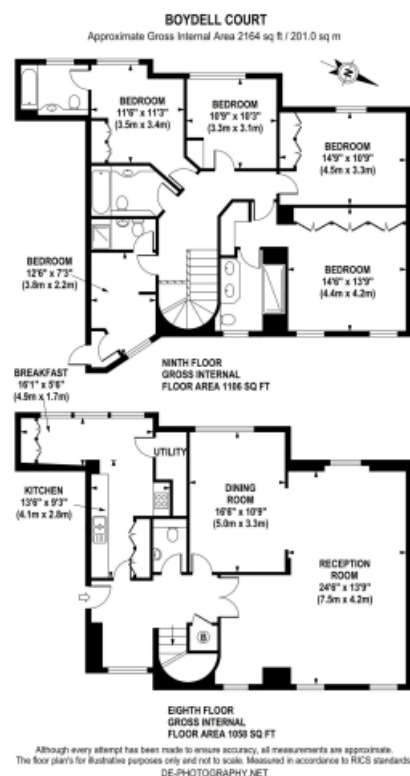
Benham & Reeves



Boydell Court, St John's Wood, NW8

£2,750 per week, £11,917 per month + fees

www.benhams.com



London branches open six days a week Mon - Sat

Canary Wharf | City | Colindale | Dartmouth Park | Ealing | Fulham
Hammersmith | Hampstead | Highgate | Hyde Park | Kensington | Kew
Knightsbridge | Nine Elms | Shoreditch | Southall | Surrey Quays
Wapping | Wembley | White City | Woolwich

International offices

China | Hong Kong SAR | India | Indonesia | Qatar | Malaysia | Middle East |
Singapore | South Africa | Thailand | Turkey



Benham & Reeves