



Benham & Reeves

Sovereign Court, Hammersmith, W6

£650 per week, £2,817 per month + fees

 2 Bedrooms  2 Bathrooms  Furnished

Spacious luxury 4th floor apartment, with good amenities, situated Hammersmith, one of West London's best-connected locations. Conveniently positioned two minutes' walk from two Underground stations (Central, Piccadilly, Hammersmith & City Lines) that make Hammersmith such a strategic transport hub.

Please [click here](#) for full detail

Property features

2 Bedrooms | 2 Bathrooms | Reception | Furnished | Fitted Kitchen | EPC-B | 24 Hours Concierge Service | Private Balcony And Communal Gardens. | Nearby Hammersmith Tube Station.

For more information about this property,
please call our Hammersmith branch on

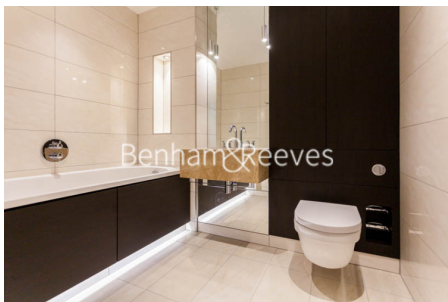
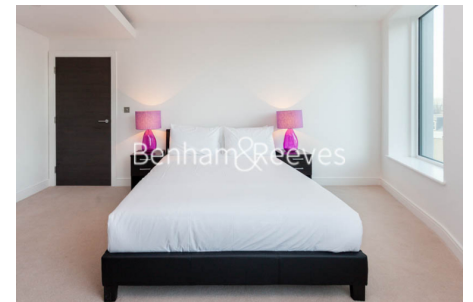
020 8600 0960

Redress & Client Money Protection :

Benham and Reeves are members of The Property Ombudsman redress scheme and have Client Money protection with ARLA Propertymark. You can find more information on our website at <https://www.benhamandreeves.com/membership/>



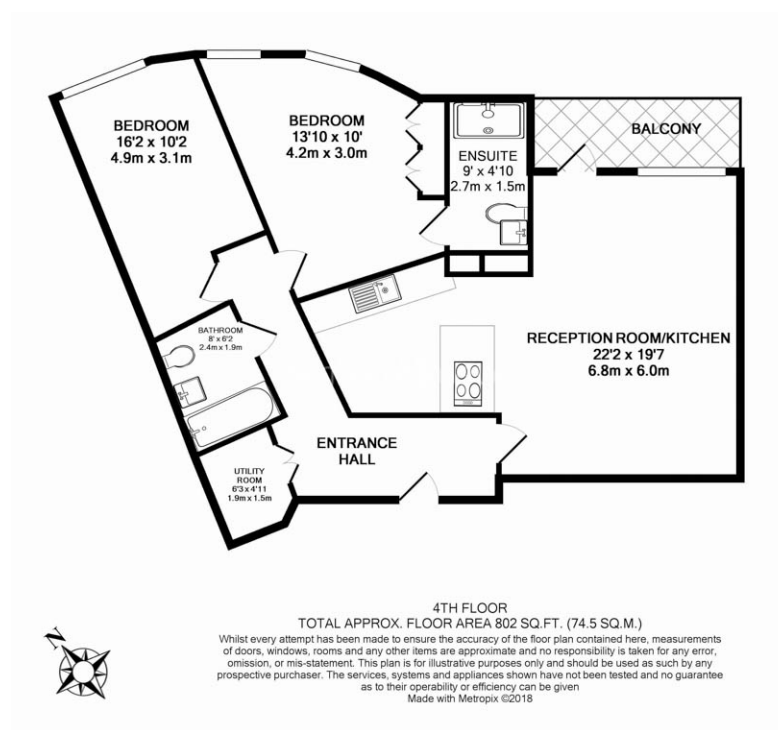
Benham & Reeves



Sovereign Court, Hammersmith, W6

£650 per week, £2,817 per month + fees

www.benhams.com



Score	Energy rating	Current	Potential
92-100	A		
81-91	B	86 B	86 B
69-80	C		
55-68	D		
39-54	E		
21-38	F		
1-20	G		

London branches open six days a week Mon - Sat

Canary Wharf | City | Colindale | Dartmouth Park | Ealing | Fulham
Hammersmith | Hampstead | Highgate | Hyde Park | Kensington | Kew
Knightsbridge | Nine Elms | Shoreditch | Southall | Surrey Quays
Wapping | Wembley | White City | Woolwich

International offices

China | Hong Kong SAR | India | Israel | Malaysia | Middle East | Pakistan
Qatar | Singapore | South Africa | Thailand | Turkey



Benham & Reeves