



Benham & Reeves

Boydell Court, St John's Wood, NW8

£1,300 per week, £5,633 per month + fees

🛏 3 Bedrooms 🚿 3 Bathrooms 🛋 Furnished

An elegant large first floor apartment set in a well-maintained purpose-built block, with off street parking and excellent portage, located in the prestigious St John's Wood. The property is ideally situated close to Swiss Cottage station (Jubilee Line).

Please [click here](#) for full detail

Property features

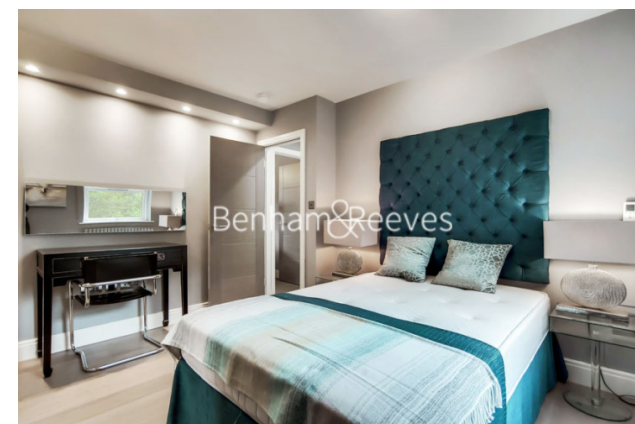
3 Bedrooms | 3 Bathrooms | Reception Room | Furnished | Fitted Kitchen | EPC-E | Gated Development , Interior Design | 24 Hour Concierge | Nearby Swiss Cottage (Jubilee Line)Station

For more information about this property,
please call our Hampstead branch on

020 7435 9681

Redress & Client Money Protection :

Benham and Reeves are members of The Property Ombudsman redress scheme and have Client Money protection with ARLA Propertymark. You can find more information on our website at <https://www.benham.com/membership/>



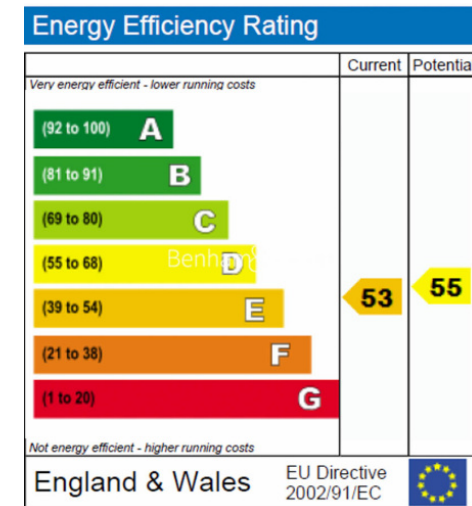
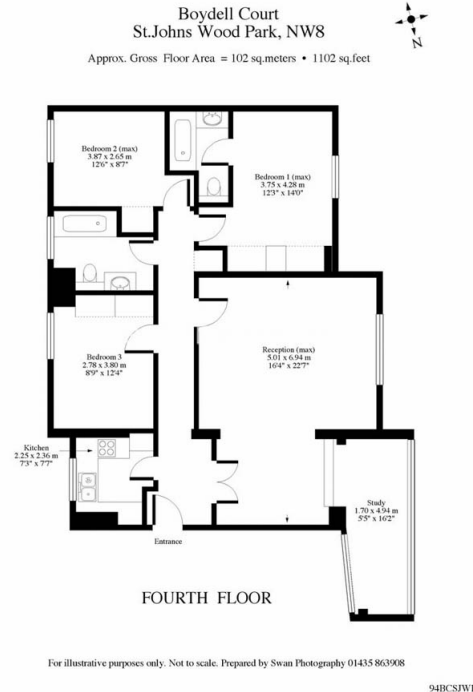
Benham & Reeves



Boydell Court, St John's Wood, NW8

£1,300 per week, £5,633 per month + fees

www.benhams.com



London branches open six days a week Mon - Sat

Canary Wharf | City | Colindale | Dartmouth Park | Ealing | Fulham
Hammersmith | Hampstead | Highgate | Hyde Park | Kensington | Kew
Knightsbridge | Nine Elms | Shoreditch | Southall | Surrey Quays
Wapping | Wembley | White City | Woolwich

International offices

China | Hong Kong SAR | India | Indonesia | Qatar | Malaysia | Middle East |
Singapore | South Africa | Thailand | Turkey



Benham & Reeves