



Benham & Reeves

**Boydell Court, St. Johns Wood Park, NW8**

£1,200 per week, £5,200 per month + fees

 3 Bedrooms    3 Bathrooms    Furnished

An immaculate, 4th floor air-conditioned duplex apartment offering interior designed luxury living and comfort to the highest of standards. Located close to the grounds of Primrose Hill and Swiss Cottage Underground (Jubilee Line).

Please [click here](#) for full detail

## Property features

**An Exceptional Apartment in a Premier Portered Building | 3 Bedrooms, 1 large Reception Room, 3 Bathrooms | Guest WC, Utility Room | Storage | Parking | EPC-TBC | Stunning Views over London | Wooden Flooring | 24-Hour Porter | Located in St Johns Wood, Close to High Street & Underground**

For more information about this property,  
please call our Hampstead branch on

**020 7435 9681**

Redress & Client Money Protection :

Benham and Reeves are members of The Property Ombudsman redress scheme and have Client Money protection with ARLA Propertymark. You can find more information on our website at <https://www.benhamandreeves.com/membership/>



**Benham & Reeves**

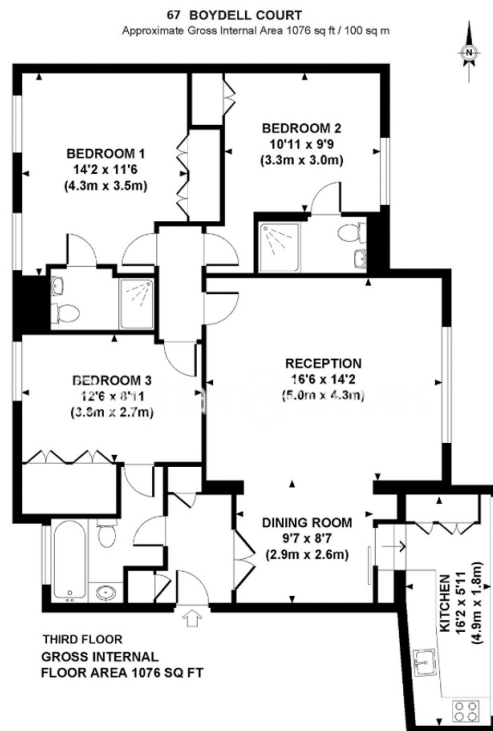




# Boydell Court, St. Johns Wood Park, NW8

£1,200 per week, £5,200 per month + fees

[www.benhams.com](http://www.benhams.com)



Although every attempt has been made to ensure accuracy, all measurements are approximate.  
The floor plan is for illustrative purposes only and not to scale. Measured in accordance to RICS standards.  
DEPHOTOGRAPHY.NET

## London branches open six days a week Mon - Sat

Canary Wharf | City | Colindale | Dartmouth Park | Ealing | Fulham  
Hammersmith | Hampstead | Highgate | Hyde Park | Kensington | Kew  
Knightsbridge | Nine Elms | Shoreditch | Southall | Surrey Quays  
Wapping | Wembley | White City | Woolwich

## International offices

China | Hong Kong SAR | India | Indonesia | Qatar | Malaysia | Middle East |  
Singapore | South Africa | Thailand | Turkey



Benham & Reeves