



Benham & Reeves

Boydell Court, St. Johns Wood Park, NW8

£1,300 per week, £5,633 per month + fees

 3 Bedrooms  2 Bathrooms 
Furnished/UnFurnished

A well-presented large apartment set in a portered block in St John's Wood, featuring contemporary furnishings throughout. Within easy access of Swiss Cottage and St Johns Wood stations (Jubilee Line).

Please [click here](#) for full detail

Property features

Modern apartment | Large reception room | Double bedrooms | Ample storage | En-suite | EPC-C | Bespoke interior | Fitted Open Plan Kitchen | Porter | Nearby Jubilee Line Tube station

For more information about this property,
please call our Hampstead branch on

020 7435 9681

Redress & Client Money Protection :

Benham and Reeves are members of The Property Ombudsman redress scheme and have Client Money protection with ARLA Propertymark. You can find more information on our website at <https://www.benhams.com/membership/>



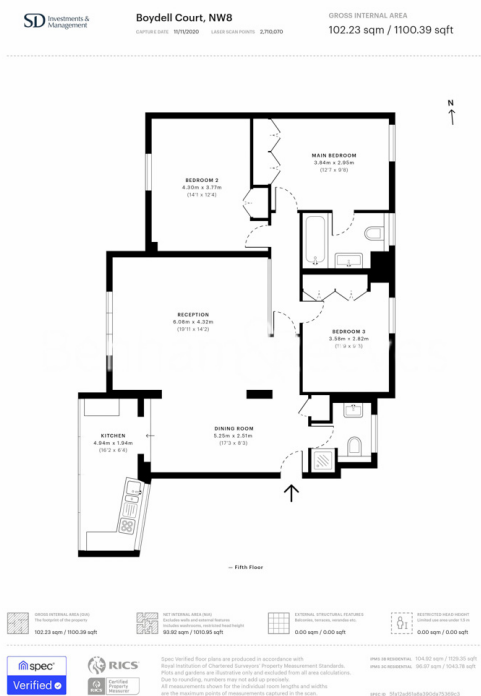
Benham & Reeves



Boydell Court, St. Johns Wood Park, NW8

£1,300 per week, £5,633 per month + fees

www.benhams.com



Score	Energy rating	Current	Potential
92+	A		
81-91	B		
69-80	C	71 c	80 c
55-68	D		
39-54	E		
21-38	F		
1-20	G		

London branches open six days a week Mon - Sat

Canary Wharf | City | Colindale | Dartmouth Park | Ealing | Fulham
Hammersmith | Hampstead | Highgate | Hyde Park | Kensington | Kew
Knightsbridge | Nine Elms | Shoreditch | Southall | Surrey Quays
Wapping | Wembley | White City | Woolwich

International offices

China | Hong Kong SAR | India | Indonesia | Qatar | Malaysia | Middle East |
Singapore | South Africa | Thailand | Turkey

