



Benham & Reeves

Brogan House, St. Josephs Street, SW8

£669 per week, £2,900 per month + fees

 1 Bedroom  1 Bathroom  Furnished

A modern one bedroom apartment located in the Sought after Battersea Exchange development located next to Battersea Park and Battersea Power station.

Please [click here](#) for full detail

Property features

One double bedroom | Winter garden | Open planned living | Dishwasher | Washer/Dryer | EPC-B | 24-hour concierge | Gym | Next to Battersea Park | Battersea Power station

For more information about this property,
please call our Property Management branch on

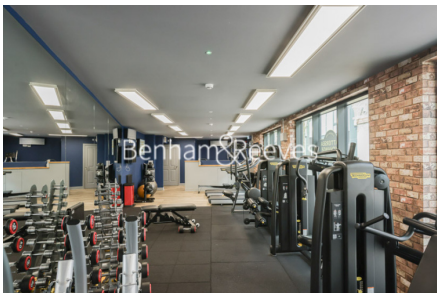
020 7319 9740

Redress & Client Money Protection :

Benham and Reeves are members of The Property Ombudsman redress scheme and have Client Money protection with ARLA Propertymark. You can find more information on our website at <https://www.benhams.com/membership/>



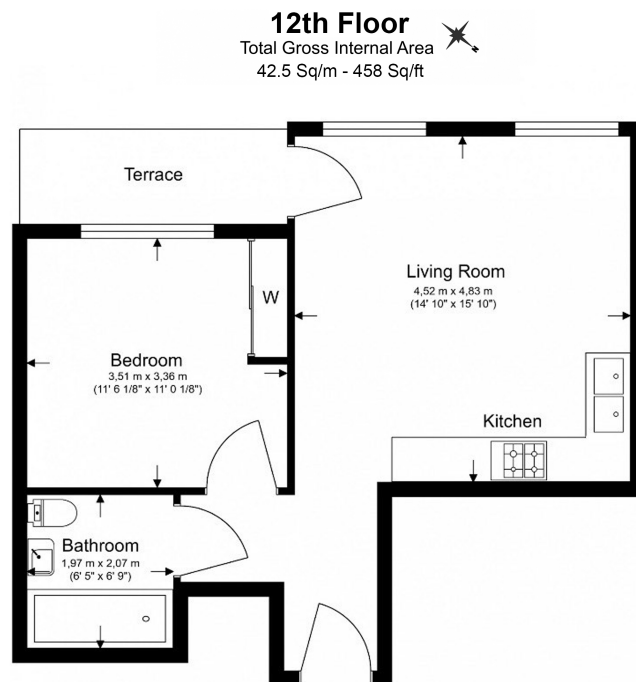
Benham & Reeves



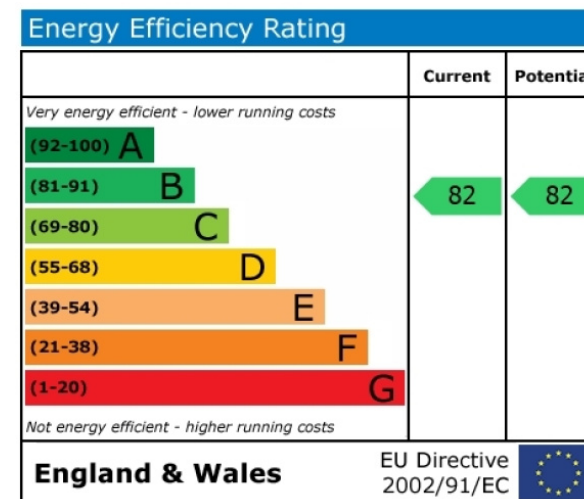
Brogan House, St. Josephs Street, SW8

£669 per week, £2,900 per month + fees

www.benhams.com



Floor Plan measurements are approximate and are for illustrative purposes only. While we do not doubt the floor plans accuracy, we make no guarantee, warranty or representation as to the accuracy and completeness of the floor plan.



London branches open six days a week Mon - Sat

Canary Wharf | City | Colindale | Dartmouth Park | Ealing | Fulham
Hammersmith | Hampstead | Highgate | Hyde Park | Kensington | Kew
Knightsbridge | Nine Elms | Shoreditch | Southall | Surrey Quays
Wapping | Wembley | White City | Woolwich

International offices

China | Hong Kong SAR | India | Indonesia | Qatar | Malaysia | Middle East |
Singapore | South Africa | Thailand | Turkey



Benham & Reeves