



Benham & Reeves

## **Brogan House, St. Josephs Street, SW8**

£669 per week, £2,900 per month + fees

 1 Bedroom    1 Bathroom    Furnished

A modern one bedroom apartment located in the Sought after Battersea Exchange development located next to Battersea Park and Battersea Power station.

Please [click here](#) for full detail

## Property features

**One double bedroom | Winter garden | Open planned living | Dishwasher | Washer/Dryer | EPC-B | 24-hour concierge | Gym | Next to Battersea Park | Battersea Power station**

For more information about this property,  
please call our Nine Elms branch on

**020 3282 3700**

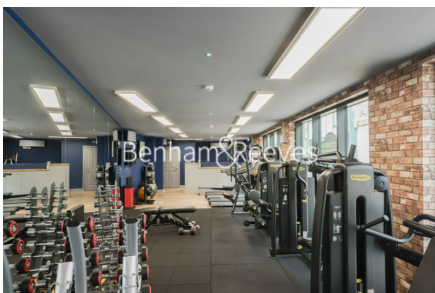
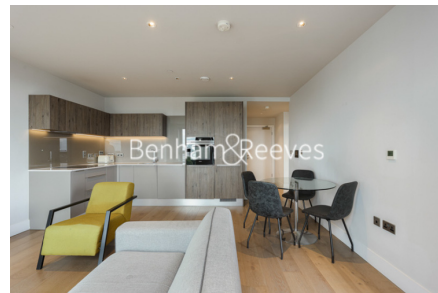
Redress & Client Money Protection :

Benham and Reeves are members of The Property Ombudsman redress scheme and have Client Money protection with ARLA Propertymark. You can find more information on our website at <https://www.benhams.com/membership/>



Benham & Reeves

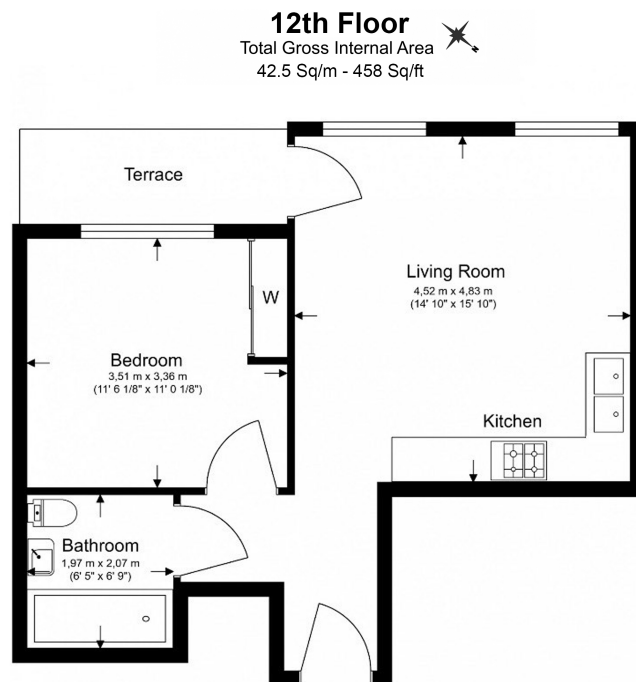




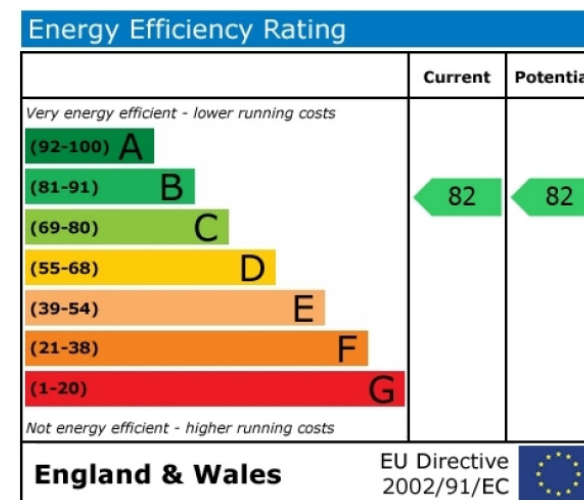
# Brogan House, St. Josephs Street, SW8

£669 per week, £2,900 per month + fees

[www.benhams.com](http://www.benhams.com)



Floor Plan measurements are approximate and are for illustrative purposes only. While we do not doubt the floor plans accuracy, we make no guarantee, warranty or representation as to the accuracy and completeness of the floor plan.



## London branches open six days a week Mon - Sat

Canary Wharf | City | Colindale | Dartmouth Park | Ealing | Fulham  
Hammersmith | Hampstead | Highgate | Hyde Park | Kensington | Kew  
Knightsbridge | Nine Elms | Shoreditch | Southall | Surrey Quays  
Wapping | Wembley | White City | Woolwich

## International offices

China | Hong Kong SAR | India | Indonesia | Qatar | Malaysia | Middle East | Pakistan  
Singapore | South Africa | Thailand | Turkey



Benham & Reeves