



Benham & Reeves

Great Eastern Road, Stratford, E15

£624 per week, £2,704 per month + fees

 2 Bedrooms  2 Bathrooms  Furnished

Enjoy luxurious living in a modern and spacious two-bedroom apartment with panoramic views of London's skyline. Located in the iconic Stratosphere Tower E15, this apartment offers style, comfort, and convenience.

Please [click here](#) for full detail

Property features

Two Double Bedrooms, Ideal For Sharers | Two Bathrooms (Including One Ensuite Shower Room | 24hr Concierge + Resident Only Roof Top Fitness Centre | Upper Level Property - Stunning Views From All Rooms | Excellent Energy Efficiency | EPC-B | World Class Shopping Mall & Sports Facilities Minutes Away | Property Offered On A Furnished Basis | Residents Roof Terrace + Lounge | Easy Access To The City/Canary Wharf And Central London

For more information about this property,
please call our Canary Wharf branch on

020 8036 3200

Redress & Client Money Protection :

Benham and Reeves are members of The Property Ombudsman redress scheme and have Client Money protection with ARLA Propertymark. You can find more information on our website at <https://www.benhamandreeves.com/membership/>



Benham & Reeves

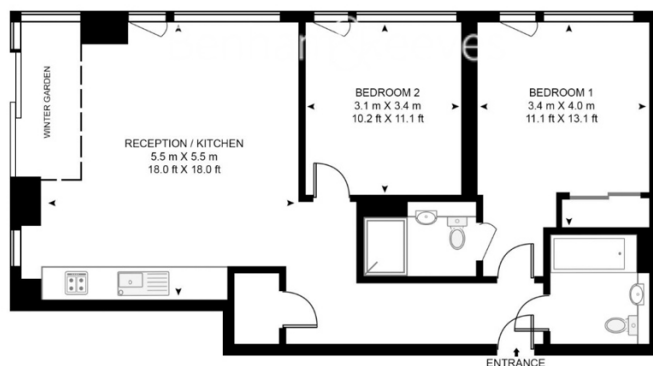


Great Eastern Road, Stratford, E15

£624 per week, £2,704 per month + fees

www.benhams.com

APPROXIMATE GROSS INTERNAL FLOOR AREA 790 SQ.FT (73.4 SQ.M)



Score	Energy rating	Current	Potential
92+	A		
81-91	B	83 B	83 B
69-80	C		
55-68	D		
39-54	E		
21-38	F		
1-20	G		

London branches open six days a week Mon - Sat

Canary Wharf | City | Colindale | Dartmouth Park | Ealing | Fulham
Hammersmith | Hampstead | Highgate | Hyde Park | Kensington | Kew
Knightsbridge | Nine Elms | Shoreditch | Southall | Surrey Quays
Wapping | Wembley | White City | Woolwich

International offices

China | Hong Kong SAR | India | Indonesia | Qatar | Malaysia | Middle East | Pakistan
Singapore | South Africa | Thailand | Turkey



Benham & Reeves