



Benham & Reeves

Dowells Street, Surrey Quays, SE10

£439 per week, £1,902 per month + fees

 1 Bedroom  1 Bathroom  Furnished

Spacious, fully furnished 2nd floor apartment situated within a sought-after development with the River Thames on the doorstep. Ideally located for Cutty Sark DLR station.

Please [click here](#) for full detail

Property features

Large Double Bedroom | Family Size Bathroom | Open Planned Living Space | Fitted Kitchen | Modern Furnishing | EPC-C | Private Balcony | 24 Hour Concierge | Near Greenwich Town Centre | Cutty Sark DLR Station

For more information about this property,
please call our Surrey Quays branch on

020 7740 3050

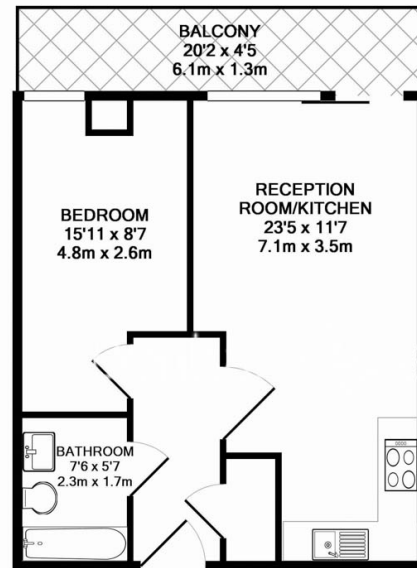




Dowells Street, Surrey Quays, SE10

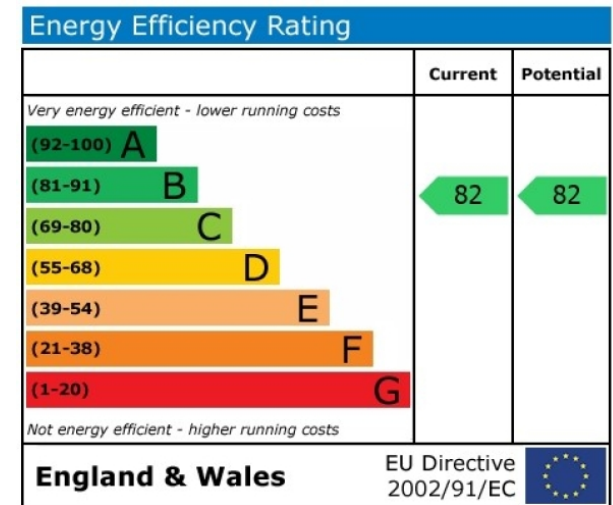
£439 per week, £1,902 per month + fees

www.benhams.com



30ER.SE10 - 4TH FLOOR
TOTAL APPROX. FLOOR AREA 471 SQ.FT. (43.8 SQ.M.)

Whilst every attempt has been made to ensure the accuracy of the floor plan contained here, measurements of doors, windows, rooms and any other items are approximate and no responsibility is taken for any error, omission, or mis-statement. This plan is for illustrative purposes only and should be used as such by any prospective purchaser. The services, systems and appliances shown have not been tested and no guarantee as to their operability or efficiency can be given.
Made with Metropix ©2017



London branches open six days a week Mon - Sat

Canary Wharf | City | Colindale | Dartmouth Park | Ealing | Fulham
Hammersmith | Hampstead | Highgate | Hyde Park | Kensington | Kew
Knightsbridge | Nine Elms | Shoreditch | Southall | Surrey Quays
Wapping | Wembley | White City | Woolwich

International offices

China | Hong Kong SAR | India | Indonesia | Qatar | Malaysia | Middle East | Pakistan
Singapore | South Africa | Thailand | Turkey



Benham & Reeves