



Benham & Reeves

Rope Street, Surrey Quays, SE16

£624 per week, £2,704 per month + fees

 2 Bedrooms  1 Bathroom  Furnished

This ultra-high spec 5th floor luxury apartment is situated in a highly sought-after luxury development, with superb views of the Greenland Quay and Canary Wharf Skyline. Located in (Zone 2). with nearby transport links from Surrey Quays Overground and Canada Water Stations. (Jubilee Line)

Please [click here](#) for full detail

Property features

2 Bedrooms | 1 Bathroom | Dual Dock Facing Balconies | 5th Floor | Hi-Spec Luxury Interior | EPC-B | 753.00 Sq Ft | Concierge | Quality Luxury Furniture | Surrey Quays Overground and Canada Water Stations

For more information about this property,
please call our Surrey Quays branch on

020 7740 3050

Redress & Client Money Protection :

Benham and Reeves are members of The Property Ombudsman redress scheme and have Client Money protection with ARLA Propertymark. You can find more information on our website at <https://www.benhamandreeves.com/membership/>



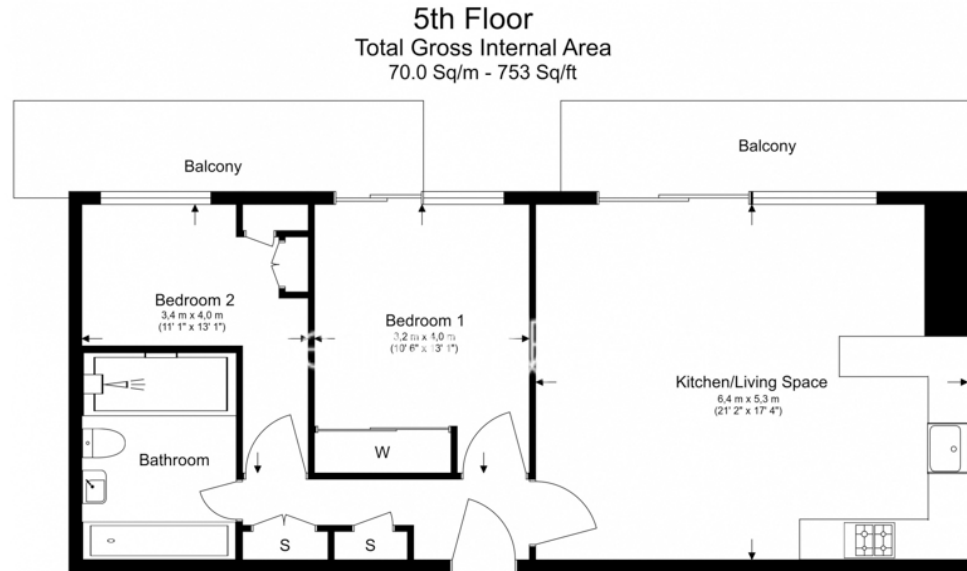
Benham&Reeves



Rope Street, Surrey Quays, SE16

£624 per week, £2,704 per month + fees

www.benhams.com



Score	Energy rating	Current	Potential
92+	A		
81-91	B	81 B	81 B
69-80	C		
55-68	D		
39-54	E		
21-38	F		
1-20	G		

London branches open six days a week Mon - Sat

Canary Wharf | City | Colindale | Dartmouth Park | Ealing | Fulham
Hammersmith | Hampstead | Highgate | Hyde Park | Kensington | Kew
Knightsbridge | Nine Elms | Shoreditch | Southall | Surrey Quays
Wapping | Wembley | White City | Woolwich

International offices

China | Hong Kong SAR | India | Indonesia | Qatar | Malaysia | Middle East | Pakistan
Singapore | South Africa | Thailand | Turkey



Benham & Reeves