



Benham & Reeves

## Seafarer Way, Surrey Quays, SE16

£415 per week, £1,800 per month + fees

🛏 1 Bedroom    🚿 1 Bathroom    🛋 Furnished

Stylish apartment situated in a vibrant Riverside development in Zone 2, a short walk from Surrey Quays Station, Canada Water Station (Jubilee Line), and five minutes form Greenland Pier for the Uber Boat service.

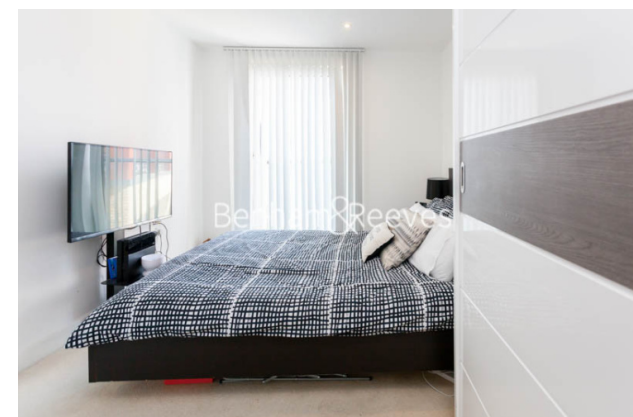
Please [click here](#) for full detail

## Property features

**Modern ONE Bedroom with living space and private balcony | Large modern Bathroom with bath tub and shower over tub | Open plan Reception with laminate flooring and access to LAR | Furnished to a modern and contemporary style | Fitted Kitchen with modern features, ample storage and fan a | EPC-B | Residents Gym on-site included in rent. | Onsite Tesco and fabulous Italian restaurant and Italian Del | 24hr Concierge, Fully maintained communal estate weekly clea | Surrey Quays Station for access into Shoreditch and City**

For more information about this property,  
please call our Surrey Quays branch on

**020 7740 3050**

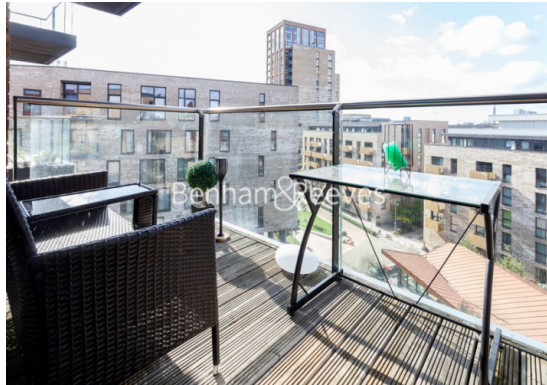
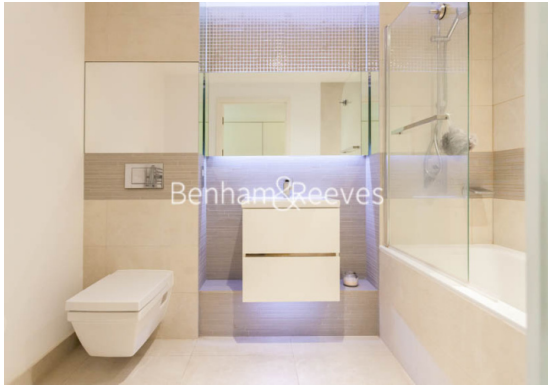


Redress & Client Money Protection :

Benham and Reeves are members of The Property Ombudsman redress scheme and have Client Money protection with ARLA Propertymark. You can find more information on our website at <https://www.benhams.com/membership/>

Benham & Reeves

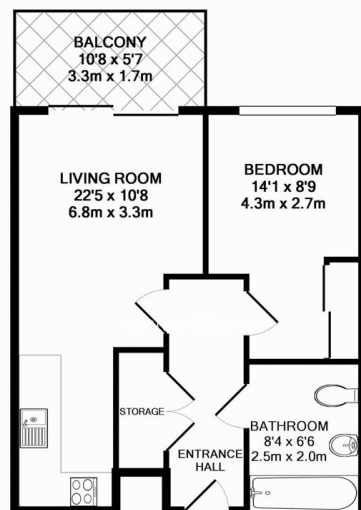




# Seafarer Way, Surrey Quays, SE16

£415 per week, £1,800 per month + fees

www.benhams.com



MARINE WHARF, SE16 7DR  
TOTAL APPROX. FLOOR AREA 429 SQ.FT. (39.8 SQ.M.)

Whilst every attempt has been made to ensure the accuracy of the floor plan contained here, measurements of doors, windows, rooms and any other items are approximate and no responsibility is taken for any error, omission, or mis-statement. This plan is for illustrative purposes only and should be used as such by any prospective purchaser. The services, systems and appliances shown have not been tested and no guarantee as to their operability or efficiency can be given.  
Made with Metropix ©2013

Score	Energy rating	Current	Potential
92+	A		
81-91	B	81   B	81   B
69-80	C		
55-68	D		
39-54	E		
21-38	F		
1-20	G		

## London branches open six days a week Mon - Sat

Canary Wharf | City | Colindale | Dartmouth Park | Ealing | Fulham  
Hammersmith | Hampstead | Highgate | Hyde Park | Kensington | Kew  
Knightsbridge | Nine Elms | Shoreditch | Southall | Surrey Quays  
Wapping | Wembley | White City | Woolwich

## International offices

China | Hong Kong SAR | India | Indonesia | Qatar | Malaysia | Middle East |  
Singapore | South Africa | Thailand | Turkey



Benham & Reeves