



Benham&Reeves

## Ashburn Gardens, Gloucester Road, SW7

£877 per week, £3,800 per month + fees

 2 Bedrooms    1 Bathroom     
Furnished/UnFurnished

A spacious and well-presented 3rd floor apartment set in a residential building, close to the amenities of South Kensington. The property is a short walk from Gloucester Road (Circle, District and Piccadilly lines) underground station.

Please [click here](#) for full detail

## Property features

**2 Bedrooms | 1 Bathroom | Reception | Furn/Unfurn | Fitted Kitchen | EPC-C | 699.4 sqft | Fitted Wardrobes | Close to Amenities | Gloucester Road (district, circle and Piccadilly lines)**

For more information about this property,  
please call our Kensington branch on

**020 7938 3522**

Redress & Client Money Protection :

Benham and Reeves are members of The Property Ombudsman redress scheme and have Client Money protection with ARLA Propertymark. You can find more information on our website at <https://www.benhams.com/membership/>



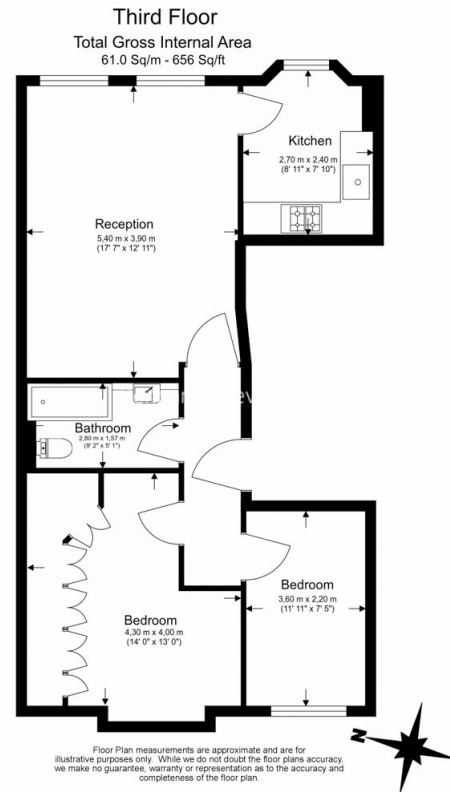
Benham & Reeves



# Ashburn Gardens, Gloucester Road, SW7

£877 per week, £3,800 per month + fees

[www.benhams.com](http://www.benhams.com)



## London branches open six days a week Mon - Sat

Canary Wharf | City | Colindale | Dartmouth Park | Ealing | Fulham  
Hammersmith | Hampstead | Highgate | Hyde Park | Kensington | Kew  
Knightsbridge | Nine Elms | Shoreditch | Southall | Surrey Quays  
Wapping | Wembley | White City | Woolwich

## International offices

China | Hong Kong SAR | India | Israel | Malaysia | Middle East | Pakistan  
Qatar | Singapore | South Africa | Thailand | Turkey



Benham & Reeves