



Benham & Reeves

Transom Close, Surrey Quays, SE16

£381 per week, £1,650 per month + fees

 Studio  1 Bathroom  Furnished

****AVAILABLE NOW**** Well-proportioned studio suite set beside South Dock Marina, featuring a separate updated kitchen, west-facing reception and sleeping area. Moments from river transport, Canada Water, local shops, cafés and scenic dockside walks.

Please [click here](#) for full detail

Property features

Well-proportioned studio suite | Sought-after marina-side location | Separate sleeping area with wardrobe space | Updated separate kitchen | Large internal storage cupboard | EPC- TBC | Resident Parking (available via separate negotiation) | Furnished | Moments from Thames Path & Greenland Pier | Easy access to Canada Water & Surrey Quays stations

For more information about this property,
please call our Surrey Quays branch on

020 7740 3050

Redress & Client Money Protection :

Benham and Reeves are members of The Property Ombudsman redress scheme and have Client Money protection with ARLA Propertymark. You can find more information on our website at <https://www.benhams.com/membership/>



Benham & Reeves

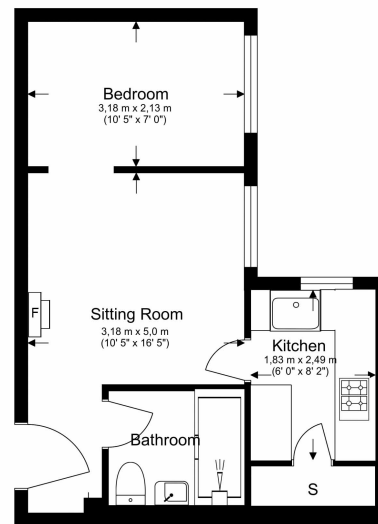


Transom Close, Surrey Quays, SE16

£381 per week, £1,650 per month + fees

www.benhams.com

Ground Floor
Total Gross Internal Area
30.2 Sq/m - 326 Sq/ft



Benham & Reeves

Floor Plan measurements are approximate and are for illustrative purposes only. While we do not doubt the floor plans accuracy, we make no guarantee, warranty or representation as to the accuracy and completeness of the floor plan.

London branches open six days a week Mon - Sat

Canary Wharf | City | Colindale | Dartmouth Park | Ealing | Fulham
Hammersmith | Hampstead | Highgate | Hyde Park | Kensington | Kew
Knightsbridge | Nine Elms | Shoreditch | Southall | Surrey Quays
Wapping | Wembley | White City | Woolwich

International offices

China | Hong Kong SAR | India | Indonesia | Qatar | Malaysia | Middle East |
Singapore | South Africa | Thailand | Turkey



Benham & Reeves