



Benham & Reeves

Naomi Street, Surrey Quays, SE8

£496 per week, £2,150 per month + fees

 1 Bedroom  1 Bathroom  Furnished

One Bedroom | One Bathroom | Furnished | EPC-C | Private Balcony | 24 Hour Concierge | Resident Gym | Resident Communal Garden | On site Co-op & Coffee Shops | Close to Surrey Quays (Overground) & Canada Water (Jubilee line) Stations

Please [click here](#) for full detail

Property features

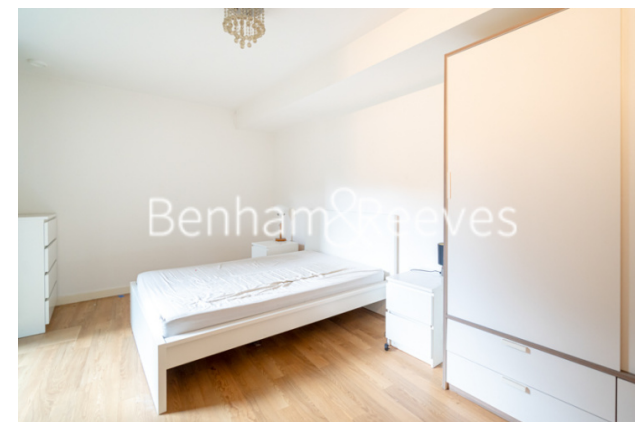
One Bedroom | One Bathroom | Private Balcony | Furnished | Resident communal garden | EPC-C | On site Co-op & Coffee Shops | 24hr concierge | Residents Gym | Close to Surrey Quays (Overground) & Canada Water (Jubilee line)

For more information about this property,
please call our Surrey Quays branch on

020 7740 3050

Redress & Client Money Protection :

Benham and Reeves are members of The Property Ombudsman redress scheme and have Client Money protection with ARLA Propertymark. You can find more information on our website at <https://www.benhams.com/membership/>



Benham & Reeves



Naomi Street, Surrey Quays, SE8

£496 per week, £2,150 per month + fees

www.benhams.com

Score	Energy rating	Current	Potential
92+	A		
81-91	B		
69-80	C	80 C	80 C
55-68	D		
39-54	E		
21-38	F		
1-20	G		

London branches open six days a week Mon - Sat

Canary Wharf | City | Colindale | Dartmouth Park | Ealing | Fulham
Hammersmith | Hampstead | Highgate | Hyde Park | Kensington | Kew
Knightsbridge | Nine Elms | Shoreditch | Southall | Surrey Quays
Wapping | Wembley | White City | Woolwich

International offices

China | Hong Kong SAR | India | Indonesia | Qatar | Malaysia | Middle East | Pakistan
Singapore | South Africa | Thailand | Turkey

