



Benham & Reeves

**Temple Fortune Lane, Temple fortune, NW11**

£427 per week, £1,850 per month + fees

🚪 2 Bedrooms    🚿 2 Bathrooms    🛏️ Furnished

A remarkable 2nd floor apartment set in a purpose-built block in NW11. Nearby Temple Fortune shops and Golders Green Tube station. EPC-B

Please [click here](#) for full detail

## Property features

**Two Double Bedrooms | Two Bathrooms | Fitted Wardrobes | Open planned Kitchen | Second Floor | EPC-B | Modern interior throughout | Moments from Temple fortune shops | Wooden Flooring | Nearby Golders Green Tube Station**

For more information about this property,  
please call our Property Management branch on

**020 7319 9740**



Redress & Client Money Protection :  
Benham and Reeves are members of The Property Ombudsman redress scheme and have Client Money protection with ARLA Propertymark.  
You can find more information on our website at <https://www.benhamandreeves.com/membership/>

Benham&Reeves

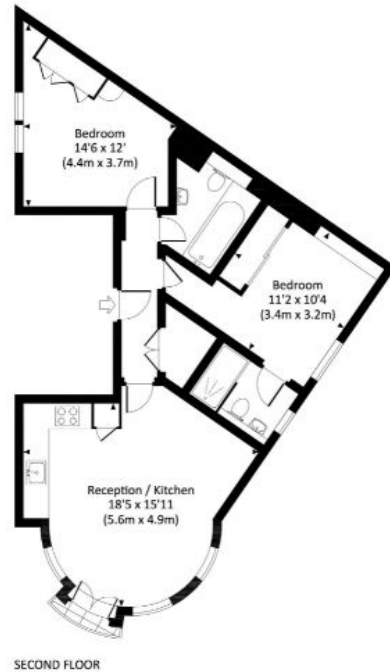




# Temple Fortune Lane, Temple fortune, NW11

£427 per week, £1,850 per month + fees

[www.benhams.com](http://www.benhams.com)



Score	Energy rating	Current	Potential
92+	A		
81-91	B	84   B	84   B
69-80	C		
55-68	D		
39-54	E		
21-38	F		
1-20	G		

## London branches open six days a week Mon - Sat

Canary Wharf | City | Colindale | Dartmouth Park | Ealing | Fulham  
Hammersmith | Hampstead | Highgate | Hyde Park | Kensington | Kew  
Knightsbridge | Nine Elms | Shoreditch | Southall | Surrey Quays  
Wapping | Wembley | White City | Woolwich

## International offices

China | Hong Kong SAR | India | Indonesia | Qatar | Malaysia | Middle East |  
Singapore | South Africa | Thailand | Turkey



Benham & Reeves