



Benham & Reeves

Camelot Close, Thamesmead, SE28

£393 per week, £1,703 per month + fees

 4 Bedrooms  2 Bathrooms  Part-furnished

A modern spacious, part furnished terrace house, with private back garden, conveniently located for access into Woolwich, The Thames path, DLR and the new Crossrail.

Please [click here](#) for full detail

Property features

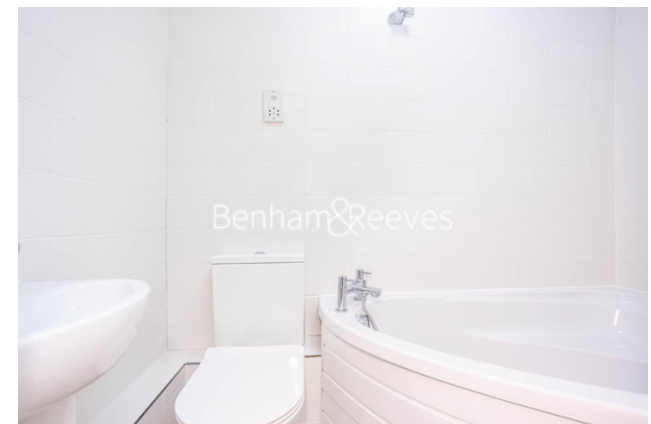
Part Furnished 4 bed 2 bath terrace house | Separate kitchen with patio terrace | On street parking available | Fitted kitchen with dishwasher, oven, washing machine | Private garden | EPC-D | Well maintained and redecorated | Space For Dining | 10 mins away from Woolwich DLR and upcoming Cross Rail

For more information about this property, please call our Woolwich branch on

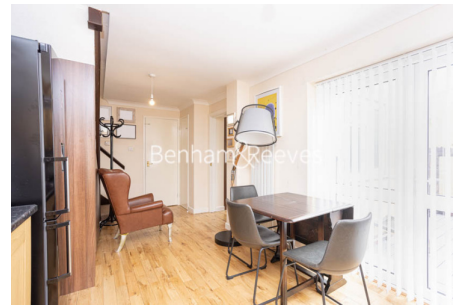
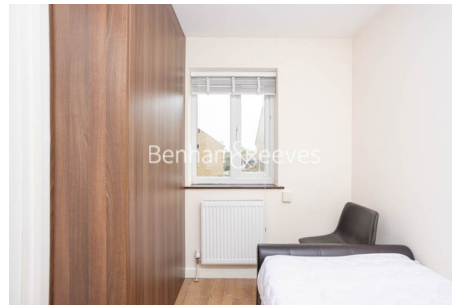
020 8051 0700

Redress & Client Money Protection :

Benham and Reeves are members of The Property Ombudsman redress scheme and have Client Money protection with ARLA Propertymark. You can find more information on our website at <https://www.benhams.com/membership/>



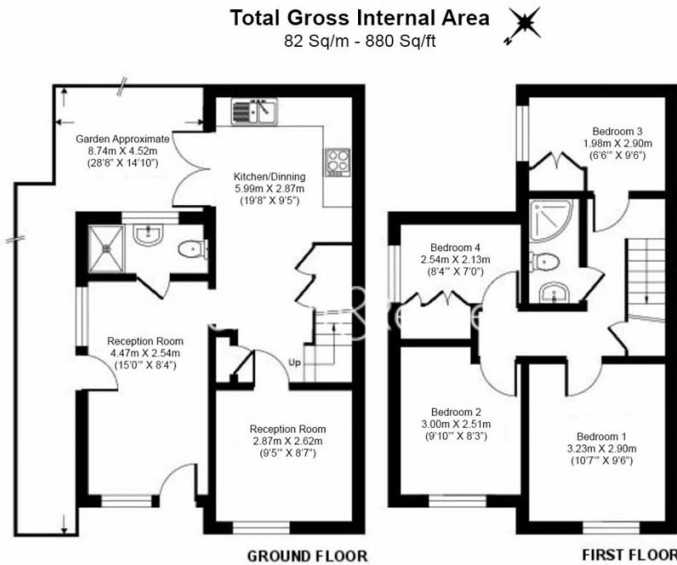
Benham & Reeves



Camelot Close, Thamesmead, SE28

£393 per week, £1,703 per month + fees

www.benhams.com



Floor Plan measurements are approximate and are for illustrative purposes only. While we do not doubt the floor plans accuracy, we make no guarantee, warranty or representation as to the accuracy and completeness of the floor plan.

Score	Energy rating	Current	Potential
92+	A		
81-91	B		88 B
69-80	C		
55-68	D	63 D	
39-54	E		
21-38	F		
1-20	G		

London branches open six days a week Mon - Sat

Canary Wharf | City | Colindale | Dartmouth Park | Ealing | Fulham
Hammersmith | Hampstead | Highgate | Hyde Park | Kensington | Kew
Knightsbridge | Nine Elms | Shoreditch | Southall | Surrey Quays
Wapping | Wembley | White City | Woolwich

International offices

China | Hong Kong SAR | India | Indonesia | Qatar | Malaysia | Middle East |
Singapore | South Africa | Thailand | Turkey

