



Benham & Reeves

Thames Point, The Boulevard, SW6

£750 per week, £3,250 per month + fees

 2 Bedrooms  2 Bathrooms  Furnished

Modern 5th floor apartment situated in a landmark Riverside development a brief walk from Imperial Wharf Station.

Please [click here](#) for full detail

Property features

2 Bedroom | 2 Bathroom | Reception | Furnished | Fitted kitchen | EPC-B | 24 hour concierge | Gym Lifts to all floors | Imperial Wharf Over ground

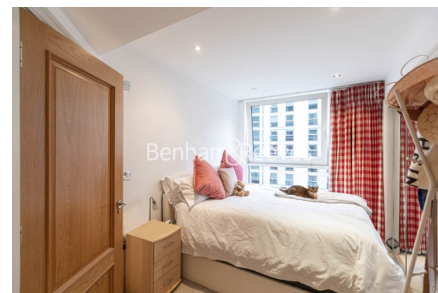
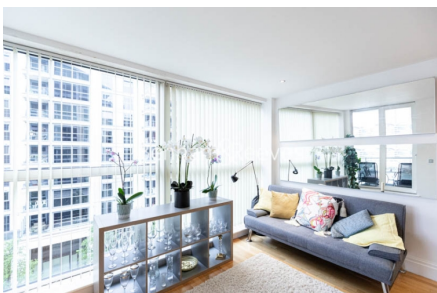
For more information about this property,
please call our Fulham branch on

020 7348 7620



Redress & Client Money Protection :
Benham and Reeves are members of The Property Ombudsman redress scheme and have Client Money protection with ARLA Propertymark.
You can find more information on our website at <https://www.benhamandreeves.com/membership/>

Benham&Reeves



Thames Point, The Boulevard, SW6

£750 per week, £3,250 per month + fees

www.benhams.com



Energy Efficiency Rating		
	Current	Potential
Very energy efficient - lower running costs		
(92 plus) A		
(81-91) B	85	88
(69-80) C		
(55-68) D		
(39-54) E		
(21-38) F		
(1-20) G		
Not energy efficient - higher running costs		
England & Wales	EU Directive 2002/91/EC	

London branches open six days a week Mon - Sat

Canary Wharf | City | Colindale | Dartmouth Park | Ealing | Fulham
Hammersmith | Hampstead | Highgate | Hyde Park | Kensington | Kew
Knightsbridge | Nine Elms | Shoreditch | Southall | Surrey Quays
Wapping | Wembley | White City | Woolwich

International offices

China | Hong Kong SAR | India | Indonesia | Qatar | Malaysia | Middle East | Pakistan
Singapore | South Africa | Thailand | Turkey



Benham & Reeves