



Benham & Reeves

**Mar House, The Hyde, NW9**

£346 per week, £1,500 per month + fees

 1 Bedroom     1 Bathroom     Unfurnished

Contemporary 3rd floor apartment, with secure underground parking space, situated within a development located 0.6 miles from Colindale Underground Station (Northern Line).

Please [click here](#) for full detail

## Property features

**Selection of local Amenities Close by | Lift Access | Private Balcony | Semi Furnished | 3rd Floor | EPC- B | Situated within Mar House, Colindale NW9 | Available to rent immediately | Secure Underground Parking | Nearby 0.6 miles to Colindale Underground Station**

For more information about this property, please call our Colindale branch on

**020 8732 7980**

Redress & Client Money Protection :

Benham and Reeves are members of The Property Ombudsman redress scheme and have Client Money protection with ARLA Propertymark. You can find more information on our website at <https://www.benhamandreeves.com/membership/>



**Benham & Reeves**

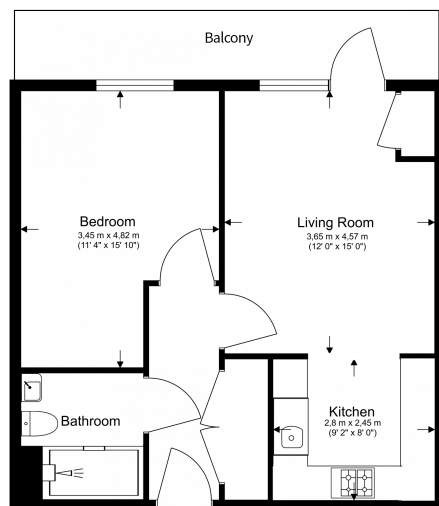


# Mar House, The Hyde, NW9

£346 per week, £1,500 per month + fees

www.benhams.com

Total Gross Internal Area  
51.3 Sq/m - 552 Sq/ft



Benham & Reeves

Floor Plan measurements are approximate and are for illustrative purposes only. While we do not doubt the floor plans accuracy, we make no guarantee, warranty or representation as to the accuracy and completeness of the floor plan.

Score	Energy rating	Current	Potential
92+	A		
81-91	B	88 B	88 B
69-80	C		
55-68	D		
39-54	E		
21-38	F		
1-20	G		

## London branches open six days a week Mon - Sat

Canary Wharf | City | Colindale | Dartmouth Park | Ealing | Fulham  
Hammersmith | Hampstead | Highgate | Hyde Park | Kensington | Kew  
Knightsbridge | Nine Elms | Shoreditch | Southall | Surrey Quays  
Wapping | Wembley | White City | Woolwich

## International offices

China | Hong Kong SAR | India | Indonesia | Qatar | Malaysia | Middle East | Pakistan  
Singapore | South Africa | Thailand | Turkey



Benham & Reeves