



Benham & Reeves

## Royal Mint Street, Tower Hill, E1

£625 per week, £2,708 per month + fees

 1 Bedroom    1 Bathroom    Furnished

Luxury apartment within a prestigious residential development in Tower Hill. Located within a short walk into The City and minutes from the DLR and London Underground

Please [click here](#) for full detail

## Property features

**Luxury One Bedroom Apartment | Open Plan Reception With Balcony | Fitted Kitchen With Fully Integrated Appliances | Integrated Heating & Cooling System | Double Bedroom With Built In Wardrobe | EPC-B | Wood Floors, Full Length Windows, Air Cooling & Underfloor | Fully Equipped & Professionally Managed Apartment | Residents Gym, Pool With Jacuzzi, Cinema, Lounge | Short Walk To Tower Hill Underground & Tower Gateway**

For more information about this property,  
please call our Wapping branch on

**020 7680 8900**

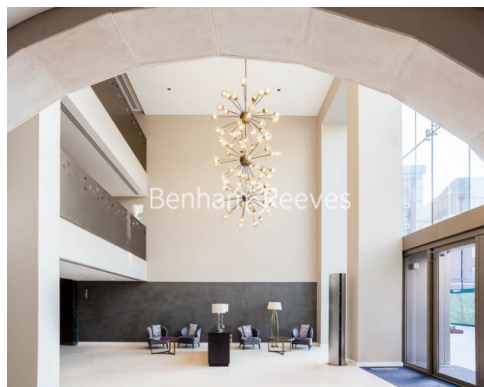
Redress & Client Money Protection :

Benham and Reeves are members of The Property Ombudsman redress scheme and have Client Money protection with ARLA Propertymark. You can find more information on our website at <https://www.benhamandreeves.com/membership/>



**Benham & Reeves**





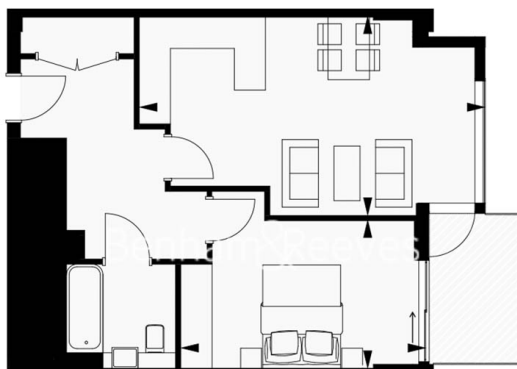
# Royal Mint Street, Tower Hill, E1

£625 per week, £2,708 per month + fees

www.benhams.com

## 9th floor

Approx Gross Area: 51 sq m / 551 sq ft



Living/Dining 6.6m x 3.8m / 21'7" x 12'5"

Master Bedroom 4.6m x 2.8m / 15'1" x 9'2"

Whilst every attempt has been made to ensure the accuracy of the floor plan contained here, measurements of doors, windows, rooms and any other items are approximate and no responsibility is taken for any error, omission, or mis-statement. This plan is for illustrative purposes only and should be used as such by any prospective purchaser. The services, systems and appliances shown have not been tested and no guarantee as to their operability or efficiency can be given.  
Made with Metropix G2015

| Score | Energy rating | Current | Potential |
|-------|---------------|---------|-----------|
| 92+   | A             |         |           |
| 81-91 | B             | 84   B  | 84   B    |
| 69-80 | C             |         |           |
| 55-68 | D             |         |           |
| 39-54 | E             |         |           |
| 21-38 | F             |         |           |
| 1-20  | G             |         |           |

## London branches open six days a week Mon - Sat

Canary Wharf | City | Colindale | Dartmouth Park | Ealing | Fulham  
Hammersmith | Hampstead | Highgate | Hyde Park | Kensington | Kew  
Knightsbridge | Nine Elms | Shoreditch | Southall | Surrey Quays  
Wapping | Wembley | White City | Woolwich

## International offices

China | Hong Kong SAR | India | Indonesia | Qatar | Malaysia | Middle East |  
Singapore | South Africa | Thailand | Turkey



Benham & Reeves