



Benham & Reeves

Octavia House, Townmead Road, SW6

£519 per week, £2,250 per month + fees

 1 Bedroom  1 Bathroom  Furnished

Spacious 6th floor apartment located in a sought-after riverside development Imperial Wharf with on-site gym, moments from Imperial Wharf Overground Station.

Please [click here](#) for full detail

Property features

1 Double Bedroom Apartment with Built-in Wardrobe (6th Floor) | Fully Fitted Kitchen Integrated with Well-Known Appliance | 24 Hr Concierge / 24 Hr Security / Communal Gardens / Bars / | Double Reception Room with Dining Area & Floor to Ceiling La | Luxurious Bathroom (with Plenty of Storage) | EPC- TBC | Residents Gym | Furnished throughout | Redecorated and refurbished | Nearby Imperial Wharf Overground Station

For more information about this property,
please call our Fulham branch on

020 7348 7620

Redress & Client Money Protection :

Benham and Reeves are members of The Property Ombudsman redress scheme and have Client Money protection with ARLA Propertymark. You can find more information on our website at <https://www.benhamandreeves.com/membership/>



Benham & Reeves

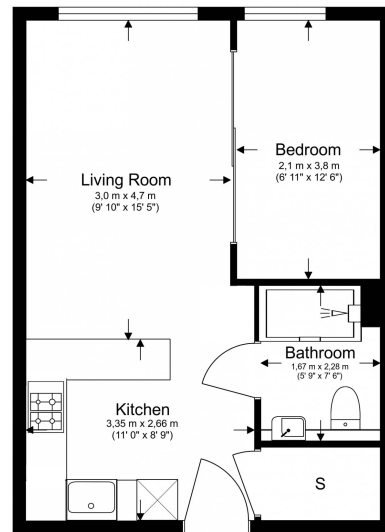


Octavia House, Townmead Road, SW6

£519 per week, £2,250 per month + fees

www.benhams.com

Total Gross Internal Area
38.3 Sq/m - 412 Sq/ft



Benham & Reeves

Floor Plan measurements are approximate and are for illustrative purposes only. While we do not doubt the floor plans accuracy, we make no guarantee, warranty or representation as to the accuracy and completeness of the floor plan.

London branches open six days a week Mon - Sat

Canary Wharf | City | Colindale | Dartmouth Park | Ealing | Fulham
Hammersmith | Hampstead | Highgate | Hyde Park | Kensington | Kew
Knightsbridge | Nine Elms | Shoreditch | Southall | Surrey Quays
Wapping | Wembley | White City | Woolwich

International offices

China | Hong Kong SAR | India | Indonesia | Qatar | Malaysia | Middle East | Pakistan
Singapore | South Africa | Thailand | Turkey



Benham & Reeves