



Benham & Reeves

**Berwick Place, Trumpington, CB2**

£369 per week, £1,600 per month + fees

🛏 1 Bedroom    🚿 1 Bathroom    🛋 Unfurnished

A modern first floor apartment, with allocated parking, situated in a sought-after development close to Cambridge University and Cambridge Science Park.

Please [click here](#) for full detail

## Property features

**1 Bedroom | 1 Bathroom | 1 Reception | Unfurnished | Fully Equipped Kitchen | EPC-B | Wood floor & Parking Space | Brand new development | Private South Facing Balcony | Nearby Berwick Railway Station**

For more information about this property, please call our Hammersmith branch on

**020 8600 0960**

Redress & Client Money Protection :

Benham and Reeves are members of The Property Ombudsman redress scheme and have Client Money protection with ARLA Propertymark. You can find more information on our website at <https://www.benhamandreeves.com/membership/>



**Benham & Reeves**



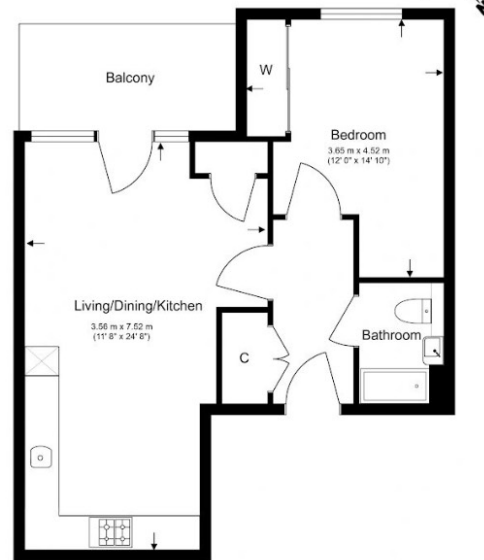


# Berwick Place, Trumpington, CB2

£369 per week, £1,600 per month + fees

[www.benhams.com](http://www.benhams.com)

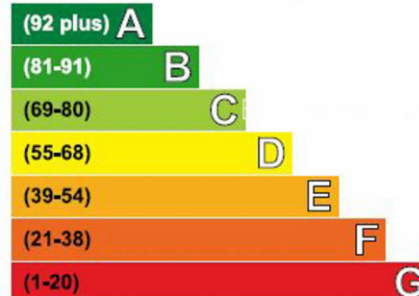
Total Gross Internal Area  
48.4 Sq/m - 520.6 Sq/ft



Floor Plan measurements are approximate and are for illustrative purposes only. While we do not doubt the floor plans accuracy, we make no guarantee, warranty or representation as to the accuracy and completeness of the floor plan.

## Energy Efficiency Rating

Very energy efficient - lower running costs



Current	Potential
84	84

Not energy efficient - higher running costs

## London branches open six days a week Mon - Sat

Canary Wharf | City | Colindale | Dartmouth Park | Ealing | Fulham  
Hammersmith | Hampstead | Highgate | Hyde Park | Kensington | Kew  
Knightsbridge | Nine Elms | Shoreditch | Southall | Surrey Quays  
Wapping | Wembley | White City | Woolwich

## International offices

China | Hong Kong SAR | India | Indonesia | Qatar | Malaysia | Middle East | Pakistan  
Singapore | South Africa | Thailand | Turkey



Benham & Reeves