



Benham & Reeves

The Corniche, Vauxhall, SE1

£2,077 per week, £9,000 per month + fees

 3 Bedrooms  3 Bathrooms  Furnished

Spacious meticulously finished 5th floor apartment with DIRECT RIVER VIEWS, AIR COOLING, and one parking space situated in a desirable development with 5* Health club a short walk from Vauxhall Station on the Albert Embankment. EPC-B

Please [click here](#) for full detail

Property features

Three double bedrooms | Direct river views | Ari cooling | Two balconies with river views | Parking space | EPC- B | 24 hour concierge | Swimming pool | Gym | Nearby Vauxhall Station

For more information about this property,
please call our Nine Elms branch on

020 3282 3700

Redress & Client Money Protection :

Benham and Reeves are members of The Property Ombudsman redress scheme and have Client Money protection with ARLA Propertymark. You can find more information on our website at <https://www.benhams.com/membership/>



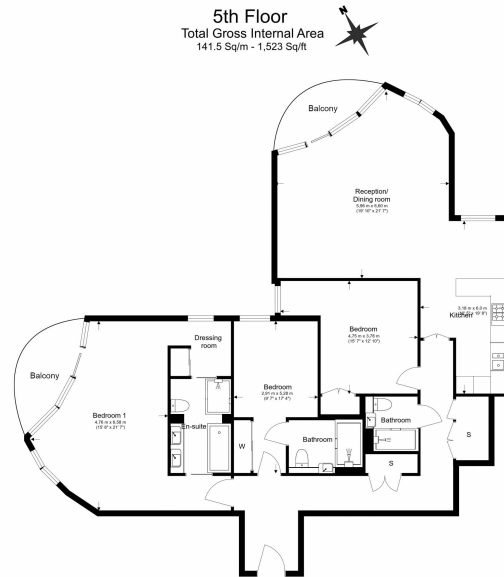
Benham & Reeves



The Corniche, Vauxhall, SE1

£2,077 per week, £9,000 per month + fees

www.benhams.com



Benham & Reeves

Floor Plan measurements are approximate and are for illustrative purposes only. While we do not doubt the floor plans accuracy, we make no guarantee, warranty or representation as to the accuracy and completeness of the floor plan.

Score	Energy rating	Current	Potential
92+	A		
81-91	B	87 B	87 B
69-80	C		
55-68	D		
39-54	E		
21-38	F		
1-20	G		

London branches open six days a week Mon - Sat

Canary Wharf | City | Colindale | Dartmouth Park | Ealing | Fulham
Hammersmith | Hampstead | Highgate | Hyde Park | Kensington | Kew
Knightsbridge | Nine Elms | Shoreditch | Southall | Surrey Quays
Wapping | Wembley | White City | Woolwich

International offices

China | Hong Kong SAR | India | Indonesia | Qatar | Malaysia | Middle East |
Singapore | South Africa | Thailand | Turkey



Benham & Reeves