



Benham & Reeves

Gasholder Place, Vauxhall, SE11

£625 per week, £2,708 per month + fees

 1 Bedroom  1 Bathroom  Furnished

A modern apartment situated in a popular development with roof terraces and gym, located next door to Tesco and a 7 minute walk from Vauxhall and Oval Stations.

Please [click here](#) for full detail

Property features

One Double bedroom | Open planned living room | Furnished | Air cooling | Balcony | EPC-B | 24 Hour concierge | Residence gym | Tesco located on site | Vauxhall and Oval Stations

For more information about this property,
please call our Nine Elms branch on

020 3282 3700

Redress & Client Money Protection :

Benham and Reeves are members of The Property Ombudsman redress scheme and have Client Money protection with ARLA Propertymark. You can find more information on our website at <https://www.benhamandreeves.com/membership/>



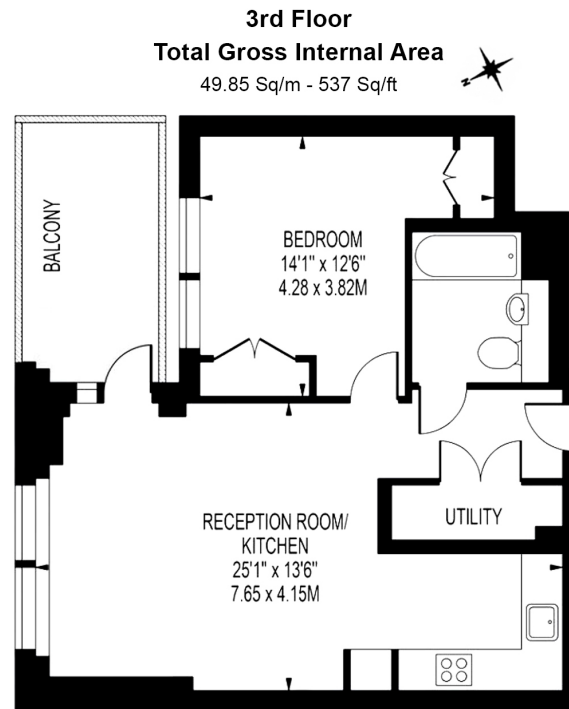
Benham & Reeves



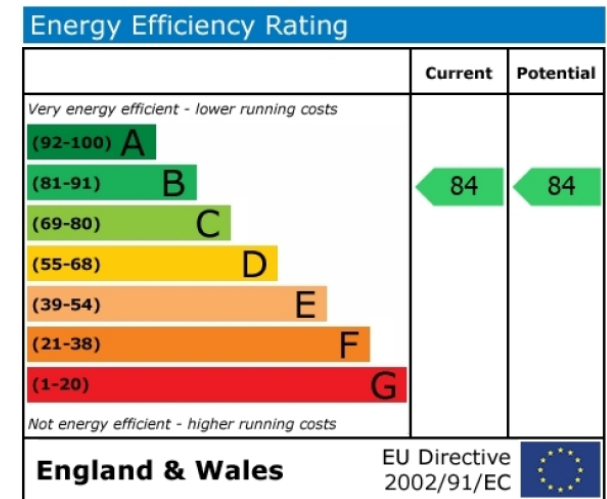
Gasholder Place, Vauxhall, SE11

£625 per week, £2,708 per month + fees

www.benhams.com



Floor Plan measurements are approximate and are for illustrative purposes only. While we do not doubt the floor plans accuracy, we make no guarantee, warranty or representation as to the accuracy and completeness of the floor plan.



London branches open six days a week Mon - Sat

Canary Wharf | City | Colindale | Dartmouth Park | Ealing | Fulham
Hammersmith | Hampstead | Highgate | Hyde Park | Kensington | Kew
Knightsbridge | Nine Elms | Shoreditch | Southall | Surrey Quays
Wapping | Wembley | White City | Woolwich

International offices

China | Hong Kong SAR | India | Indonesia | Qatar | Malaysia | Middle East |
Singapore | South Africa | Thailand | Turkey



Benham & Reeves