



Benham & Reeves

Damac Tower, Vauxhall, SW8

£808 per week, £3,500 per month + fees

 1 Bedroom  1 Bathroom  Furnished

Stylish 5th floor apartment situated within a desirable development, with stunning amenities, located next to Vauxhall Station (Victoria Line).

Please [click here](#) for full detail

Property features

Furnished | One bedroom | Open planned living | Winter garden | Air cooling | EPC-B | 24 Hour concierge | Swimming pool | Gym | Nearby Vauxhall Station

For more information about this property,
please call our Nine Elms branch on

020 3282 3700

Redress & Client Money Protection :

Benham and Reeves are members of The Property Ombudsman redress scheme and have Client Money protection with ARLA Propertymark. You can find more information on our website at <https://www.benhams.com/membership/>



Benham & Reeves



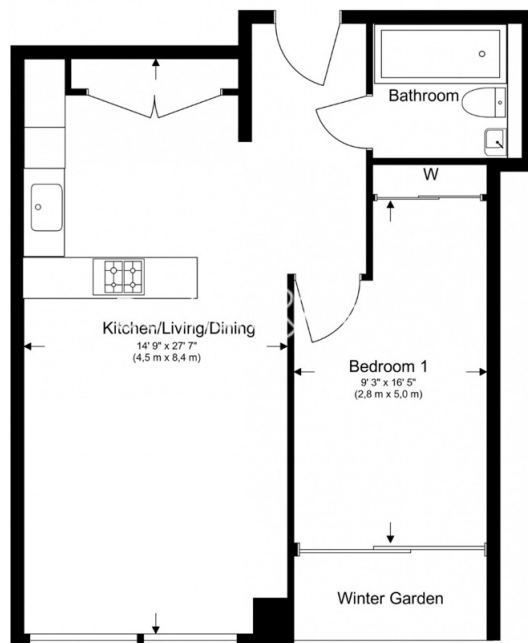
Damac Tower, Vauxhall, SW8

£808 per week, £3,500 per month + fees

www.benhams.com

Total Gross Internal Area

55.5 Sq/m - 598.4 Sq/ft



Floor Plan measurements are approximate and are for illustrative purposes only. While we do not doubt the floor plans accuracy, we make no guarantee, warranty or representation as to the accuracy and completeness of the floor plan.

Energy Efficiency Rating		
	Current	Potential
Very energy efficient - lower running costs		
(92-100) A		
(81-91) B	84	84
(69-80) C		
(55-68) D		
(39-54) E		
(21-38) F		
(1-20) G		
Not energy efficient - higher running costs		
England & Wales	EU Directive 2002/91/EC	

London branches open six days a week Mon - Sat

Canary Wharf | City | Colindale | Dartmouth Park | Ealing | Fulham
Hammersmith | Hampstead | Highgate | Hyde Park | Kensington | Kew
Knightsbridge | Nine Elms | Shoreditch | Southall | Surrey Quays
Wapping | Wembley | White City | Woolwich

International offices

China | Hong Kong SAR | India | Indonesia | Qatar | Malaysia | Middle East | Pakistan
Singapore | South Africa | Thailand | Turkey



Benham & Reeves