



Benham & Reeves

## Thames City, Vauxhall, SW8

£1,000 per week, £4,333 per month + fees

 2 Bedrooms    2 Bathrooms    Furnished

A spacious 17th floor apartment with stunning views of the River Thames and Central London, fully furnished situated in a luxury development a short walk from Vauxhall and Nine Elms Tube Stations.

Please [click here](#) for full detail

## Property features

**Furnished | 17th floor | River views | Air cooling | Open planned living | EPC-B | 24 Hour Concierge | Swimming Pool | Gym | Vauxhall Station**

For more information about this property,  
please call our Nine Elms branch on

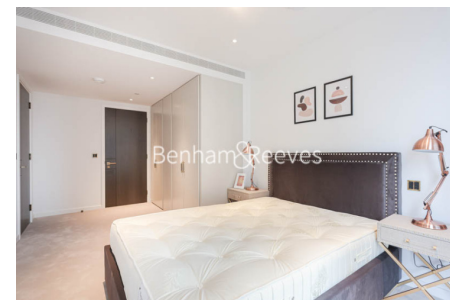
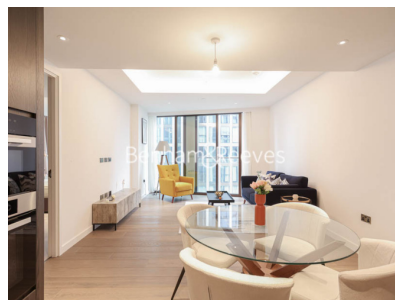
**020 3282 3700**

Redress & Client Money Protection :

Benham and Reeves are members of The Property Ombudsman redress scheme and have Client Money protection with ARLA Propertymark. You can find more information on our website at <https://www.benhamandreeves.com/membership/>



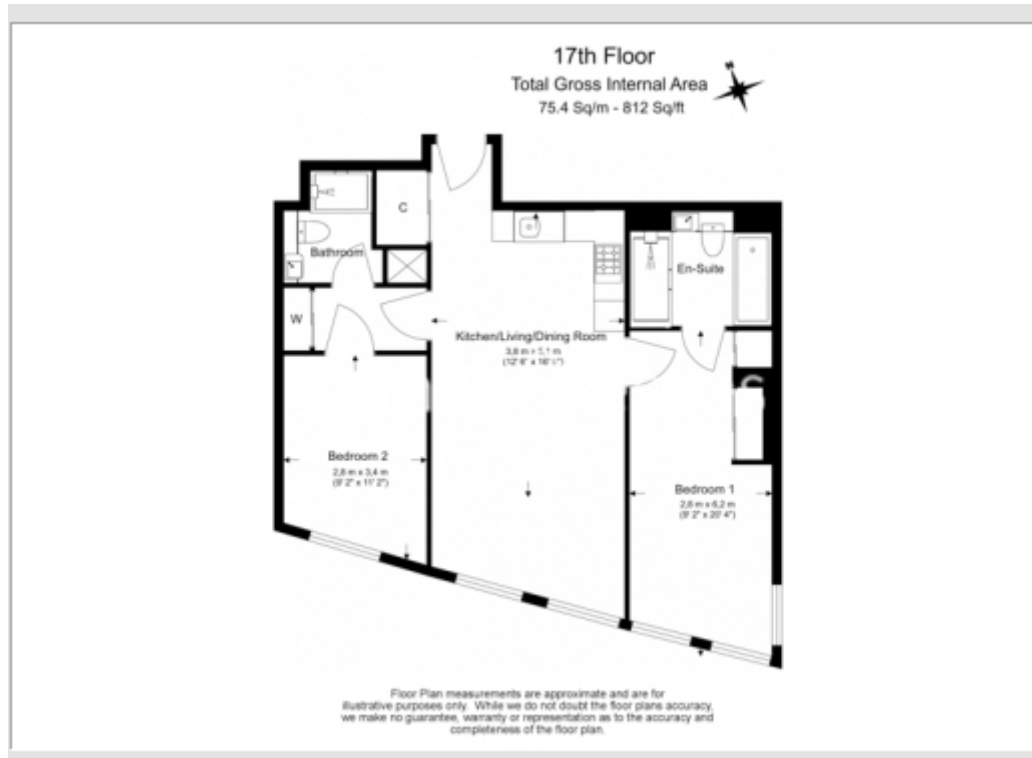
**Benham & Reeves**



# Thames City, Vauxhall, SW8

£1,000 per week, £4,333 per month + fees

[www.benhams.com](http://www.benhams.com)



Energy Efficiency Rating		
	Current	Potential
Very energy efficient - lower running costs		
(92-100) A		
(81-91) B	86	86
(69-80) C		
(55-68) D		
(39-54) E		
(21-38) F		
(1-20) G		
Not energy efficient - higher running costs		
England & Wales	EU Directive 2002/91/EC	

## London branches open six days a week Mon - Sat

Canary Wharf | City | Colindale | Dartmouth Park | Ealing | Fulham  
Hammersmith | Hampstead | Highgate | Hyde Park | Kensington | Kew  
Knightsbridge | Nine Elms | Shoreditch | Southall | Surrey Quays  
Wapping | Wembley | White City | Woolwich

## International offices

China | Hong Kong SAR | India | Indonesia | Qatar | Malaysia | Middle East | Pakistan  
Singapore | South Africa | Thailand | Turkey



Benham & Reeves