



Benham & Reeves

**Bondway, Vauxhall, SW8**

£808 per week, £3,501 per month + fees

 1 Bedroom    1 Bathroom    Furnished

A fashionable apartment situated in a desirable development featuring Versace inspired feature and boasting 5\* resident's facilities, including Roof Terrace and Spa. Located a two-minute walk from Vauxhall Station (Victoria Line).

Please [click here](#) for full detail

## Property features

**One double bedroom | Furnished | Air cooling | Winter garden | Residence Lounge | EPC-B | 24 hour concierge | Swimming Pool | Gym | Vauxhall Station**

For more information about this property,  
please call our Nine Elms branch on

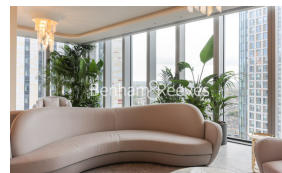
**020 3282 3700**

Redress & Client Money Protection :

Benham and Reeves are members of The Property Ombudsman redress scheme and have Client Money protection with ARLA Propertymark. You can find more information on our website at <https://www.benhams.com/membership/>



Benham&Reeves





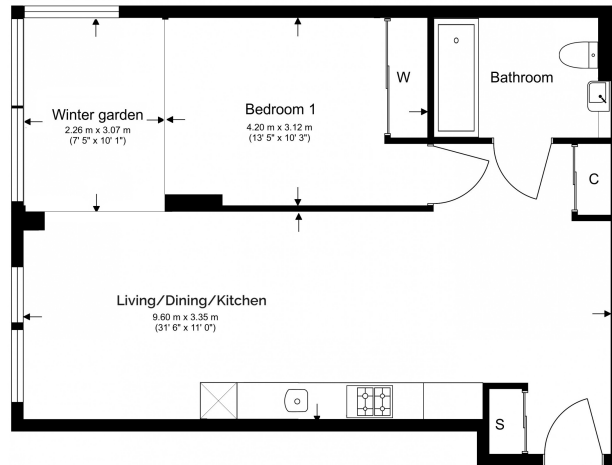
# Bondway, Vauxhall, SW8

£808 per week, £3,501 per month + fees

[www.benhams.com](http://www.benhams.com)

## Total Gross Internal Area

57 Sq/m - 613 Sq/ft



Floor Plan measurements are approximate and are for illustrative purposes only. While we do not doubt the floor plans accuracy, we make no guarantee, warranty or representation as to the accuracy and completeness of the floor plan.

Score	Energy rating	Current	Potential
92+	A		
81-91	B	84 B	84 B
69-80	C		
55-68	D		
39-54	E		
21-38	F		
1-20	G		

## London branches open six days a week Mon - Sat

Canary Wharf | City | Colindale | Dartmouth Park | Ealing | Fulham  
Hammersmith | Hampstead | Highgate | Hyde Park | Kensington | Kew  
Knightsbridge | Nine Elms | Shoreditch | Southall | Surrey Quays  
Wapping | Wembley | White City | Woolwich

## International offices

China | Hong Kong SAR | India | Indonesia | Qatar | Malaysia | Middle East | Pakistan  
Singapore | South Africa | Thailand | Turkey



Benham & Reeves