



Benham & Reeves

**Thames City, Vauxhall, SW8**

£1,375 per week, £5,958 per month + fees

 3 Bedrooms    2 Bathrooms    Furnished

Spacious bright 12th floor apartment situated in a luxury development which offers 5\* residents' facilities moments from Linnea Park and The River Thames. A 5 minute walk from Nine Elms Tube Station (Northern Line) and 10 minutes on foot to The Battersea Power Station shopping district.

Please [click here](#) for full detail

## Property features

**Three double bedrooms | Two bathrooms | Air cooling | Repainted | 5\* facilities | EPC-B | 24-hour concierge | Swimming Pool | Gym | Vauxhall Station**

For more information about this property, please call our Nine Elms branch on

**020 3282 3700**

Redress & Client Money Protection :

Benham and Reeves are members of The Property Ombudsman redress scheme and have Client Money protection with ARLA Propertymark. You can find more information on our website at <https://www.benhams.com/membership/>



Benham & Reeves

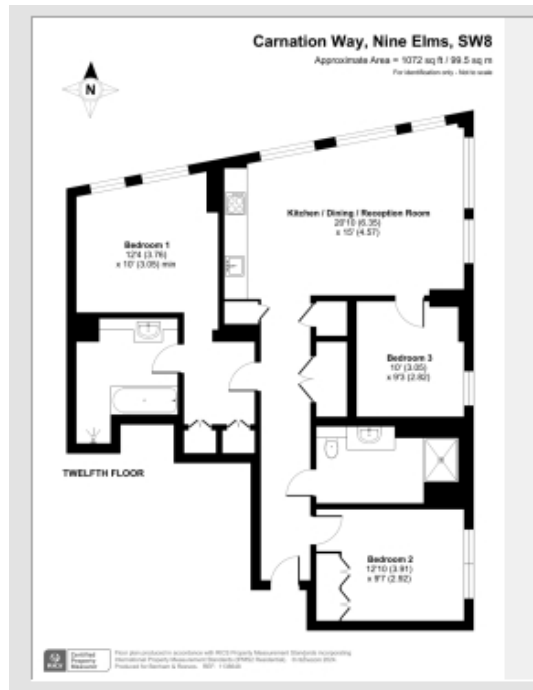




# Thames City, Vauxhall, SW8

£1,375 per week, £5,958 per month + fees

www.benhams.com



Score	Energy rating	Current	Potential
92+	A		
81-91	B	85 B	85 B
69-80	C		
55-68	D		
39-54	E		
21-38	F		
1-20	G		

## London branches open six days a week Mon - Sat

Canary Wharf | City | Colindale | Dartmouth Park | Ealing | Fulham  
Hammersmith | Hampstead | Highgate | Hyde Park | Kensington | Kew  
Knightsbridge | Nine Elms | Shoreditch | Southall | Surrey Quays  
Wapping | Wembley | White City | Woolwich

## International offices

China | Hong Kong SAR | India | Indonesia | Qatar | Malaysia | Middle East | Pakistan  
Singapore | South Africa | Thailand | Turkey

